

## Product datasheet for **AP52275PU-N**

### **JUNB (Center) Rabbit Polyclonal Antibody**

#### **Product data:**

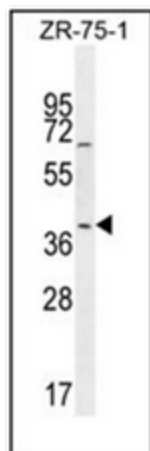
Product Type:	Primary Antibodies
Applications:	WB
Recommended Dilution:	<b>ELISA:</b> 1/1000. <b>Western Blot:</b> 1/100-1/500.
Reactivity:	Human
Host:	Rabbit
Isotype:	Ig
Clonality:	Polyclonal
Immunogen:	KLH conjugated synthetic peptide between 256-284 amino acids from the Central region of Human Jun-B
Specificity:	This antibody recognizes Human Jun-B (Center).
Formulation:	PBS containing 0.09% (W/V) Sodium Azide as preservative State: Aff - Purified State: Liquid purified Ig fraction
Concentration:	lot specific
Purification:	Protein A column, followed by peptide affinity purification
Conjugation:	Unconjugated
Storage:	Store undiluted at 2-8°C for one month or (in aliquots) at -20°C for longer. Avoid repeated freezing and thawing.
Stability:	Shelf life: one year from despatch.
Gene Name:	JunB proto-oncogene, AP-1 transcription factor subunit
Database Link:	<a href="#">Entrez Gene 3726 Human P17275</a>
Background:	Transcription factor involved in regulating gene activity following the primary growth factor response. Binds to the DNA sequence 5'-TGA[CG]TCA-3'
Synonyms:	JUNB
Note:	<b>Molecular Weight:</b> 35879 Da



[View online »](#)

Protein Families: Druggable Genome, Transcription Factors

### Product images:



Western blot analysis of Jun-B Antibody (Center) in ZR-75-1 cell line lysates (35ug/lane). This demonstrates the JUNB antibody detected the JUNB protein (arrow).