

Product datasheet for **AP52274PU-N**

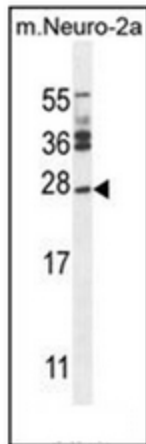
Josephin 2 (JOSD2) (N-term) Rabbit Polyclonal Antibody

Product data:

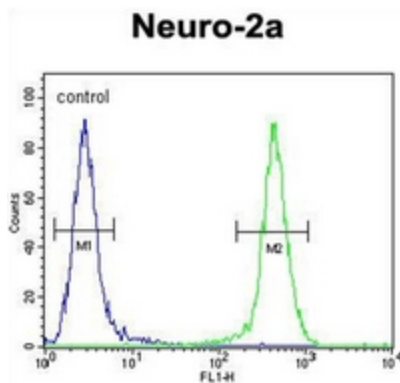
Product Type:	Primary Antibodies
Applications:	FC, WB
Recommended Dilution:	ELISA: 1/1000. Western Blot: 1/100-1/500. Flow Cytometry: 1/10-1/50.
Reactivity:	Human, Mouse
Host:	Rabbit
Isotype:	Ig
Clonality:	Polyclonal
Immunogen:	KLH conjugated synthetic peptide from the N-terminal region of Human Josephin-2
Specificity:	This antibody recognizes Human and Mouse Josephin-2 (N-term).
Formulation:	PBS containing 0.09% (W/V) Sodium Azide as preservative State: Aff - Purified State: Liquid purified Ig fraction
Concentration:	lot specific
Purification:	Protein A column, followed by peptide affinity purification
Conjugation:	Unconjugated
Gene Name:	Josephin domain containing 2
Database Link:	Entrez Gene 66124 Mouse Entrez Gene 126119 Human Q8TAC2
Synonyms:	JOSD2
Note:	Molecular Weight: 20756 Da
Protein Families:	Druggable Genome



[View online »](#)

Product images:

Western blot analysis of Josephin-2 Antibody (N-term) in mouse Neuro-2a cell line lysates (35ug/lane). This demonstrates the JOSD2 antibody detected the JOSD2 protein (arrow).



Flow cytometric analysis of Neuro-2a cells using Josephin-2 Antibody (N-term) (right histogram) compared to a negative control cell (left histogram). FITC-conjugated goat-anti-rabbit secondary antibodies were used for the analysis.