

## Product datasheet for **AP52273PU-N**

### JMJD5 (KDM8) (N-term) Rabbit Polyclonal Antibody

#### Product data:

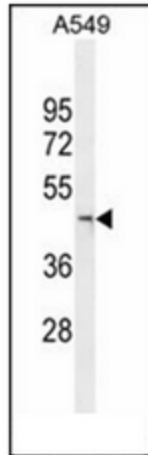
Product Type:	Primary Antibodies
Applications:	WB
Recommended Dilution:	<b>ELISA:</b> 1/1000. <b>Western Blot:</b> 1/1000.
Reactivity:	Human
Host:	Rabbit
Isotype:	Ig
Clonality:	Polyclonal
Immunogen:	KLH conjugated synthetic peptide between 36-63 amino acids from the N-terminal region of human JMJD5
Specificity:	This antibody recognizes Human JMJD5 (N-term).
Formulation:	PBS containing 0.09% (W/V) Sodium Azide as preservative State: Aff - Purified State: Liquid purified Ig fraction
Concentration:	lot specific
Purification:	Protein A column, followed by peptide affinity purification
Conjugation:	Unconjugated
Storage:	Store undiluted at 2-8°C for one month or (in aliquots) at -20°C for longer. Avoid repeated freezing and thawing.
Stability:	Shelf life: one year from despatch.
Gene Name:	lysine demethylase 8
Database Link:	<a href="#">Entrez Gene 79831 Human Q8N371</a>
Background:	This gene likely encodes a histone lysine demethylase. Studies of a similar protein in mouse indicate a potential role for this protein as a tumor suppressor. Alternatively spliced transcript variants have been described.
Synonyms:	JmjC domain-containing protein 5, FLJ13798, Jumonji domain-containing protein 5



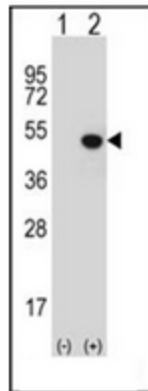
[View online »](#)

Note: **Molecular Weight:** 47270 Da

**Product images:**



Western blot analysis of JMJD5 Antibody (N-term) in A549 cell line lysates (35ug/lane). This demonstrates the JMJD5 antibody detected the JMJD5 protein (arrow).



Western blot analysis of JMJD5 (arrow) using JMJD5 Antibody (N-term). 293 cell lysates (2 ug/lane) either nontransfected (Lane 1) or transiently transfected (Lane 2) with the JMJD5 gene.