

Product datasheet for **AP52272PU-N**

KDM4C (C-term) Rabbit Polyclonal Antibody

Product data:

Product Type:	Primary Antibodies
Applications:	FC, WB
Recommended Dilution:	ELISA: 1/1000. Western Blot: 1/100-1/500. Flow Cytometry: 1/10-1/50.
Reactivity:	Human
Host:	Rabbit
Isotype:	Ig
Clonality:	Polyclonal
Immunogen:	KLH conjugated synthetic peptide between 1030-1056 amino acids from the C-terminal region of human JMJD2C
Specificity:	This antibody recognizes Human JMJD2C / KDM4C (C-term).
Formulation:	PBS containing 0.09% (W/V) Sodium Azide as preservative State: Aff - Purified State: Liquid purified Ig fraction
Concentration:	lot specific
Purification:	Protein A column, followed by peptide affinity purification
Conjugation:	Unconjugated
Storage:	Store undiluted at 2-8°C for one month or (in aliquots) at -20°C for longer. Avoid repeated freezing and thawing.
Stability:	Shelf life: one year from despatch.
Gene Name:	lysine demethylase 4C
Database Link:	Entrez Gene 23081 Human Q9H3R0



[View online »](#)

Background:

This gene is a member of the Jumonji domain 2 (JMJD2) family and encodes a protein with one JmjC domain, one JmjN domain, two PHD-type zinc fingers, and two Tudor domains. This nuclear protein functions as a trimethylation-specific demethylase, converting specific trimethylated histone residues to the dimethylated form. Chromosomal aberrations and increased transcriptional expression of this gene are associated with esophageal squamous cell carcinoma. Alternative splicing results in multiple transcript variants.

Synonyms:

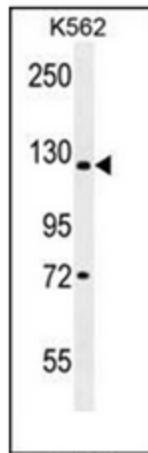
GASC1, JHDM3C, KIAA0780, GASC-1 protein

Note:

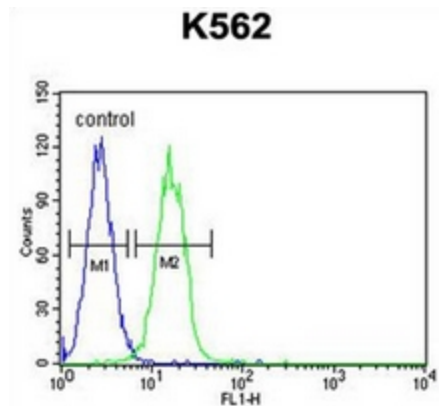
Molecular Weight: 119982 Da

Protein Families:

Druggable Genome, Transcription Factors

Product images:


Western blot analysis of JMJD2C Antibody (C-term) in K562 cell line lysates (35ug/lane). This demonstrates the JMJD2C antibody detected the JMJD2C protein (arrow).



Flow cytometric analysis of K562 cells using JMJD2C Antibody (C-term) (right histogram) compared to a negative control cell (left histogram). FITC-conjugated goat-anti-rabbit secondary antibodies were used for the analysis.