

## Product datasheet for **AP52270PU-N**

### **KDM4B Rabbit Polyclonal Antibody**

#### **Product data:**

Product Type:	Primary Antibodies
Applications:	WB
Recommended Dilution:	<b>ELISA:</b> 1/1000. <b>Western Blot:</b> 1/100-1/500.
Reactivity:	Human, Mouse
Host:	Rabbit
Isotype:	Ig
Clonality:	Polyclonal
Immunogen:	KLH conjugated synthetic peptide between 287~316 amino acids from the C-terminal region of human JMJD2B
Specificity:	This antibody recognizes Human and Mouse JMJD2B (Thr305)
Formulation:	PBS containing 0.09% (W/V) Sodium Azide as preservative State: Aff - Purified State: Liquid purified Ig fraction
Concentration:	lot specific
Purification:	Protein A column, followed by peptide affinity purification
Conjugation:	Unconjugated
Storage:	Store undiluted at 2-8°C for one month or (in aliquots) at -20°C for longer. Avoid repeated freezing and thawing.
Stability:	Shelf life: one year from despatch.
Gene Name:	lysine demethylase 4B
Database Link:	<a href="#">Entrez Gene 193796 Mouse</a> <a href="#">Entrez Gene 23030 Human</a> <a href="#">O94953</a>
Background:	Histone demethylase that specifically demethylates 'Lys-9' of histone H3, thereby playing a role in histone code. Does not demethylate histone H3 'Lys-4', H3 'Lys-27', H3 'Lys-36' nor H4 'Lys-20'. Only able to demethylate trimethylated H3 'Lys-9', with a weaker activity than KDM4A, KDM4C and KDM4D. Demethylation of Lys residue generates formaldehyde and succinate.
Synonyms:	JHDM3B, KIAA0876

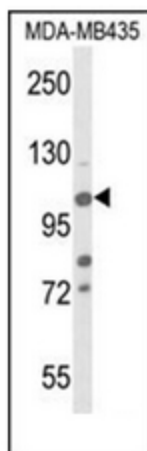


[View online »](#)

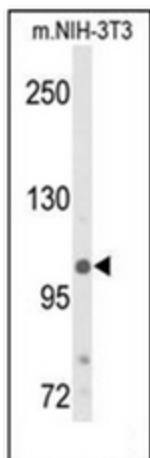
Note: **Molecular Weight:** 121897 Da

Protein Families: Druggable Genome

### Product images:



Western blot analysis of Phospho-JMJD2B-pT305 in MDA-MB435 cell line lysates (35ug/lane). JMJD2B (arrow) was detected using the purified Pab.



Western blot analysis of Phospho-JMJD2B-pT305 in NIH-3T3 cell line lysates (35ug/lane). JMJD2B (arrow) was detected using the purified Pab.