

## Product datasheet for **AP52269PU-N**

### **KDM4B (N-term) Rabbit Polyclonal Antibody**

#### **Product data:**

Product Type:	Primary Antibodies
Applications:	FC, IHC, WB
Recommended Dilution:	<b>ELISA:</b> 1/1000. <b>Western Blot:</b> 1/1000. <b>Flow Cytometry:</b> 1/10-1/50. <b>Immunohistochemistry on Paraffin Sections:</b> 1/50-1/100.
Reactivity:	Human
Host:	Rabbit
Isotype:	Ig
Clonality:	Polyclonal
Immunogen:	KLH conjugated synthetic peptide between 4-31 amino acids from the N-terminal region of human JMJD2B
Specificity:	This antibody recognizes Human JMJD2B / KDM4B (N-term).
Formulation:	PBS containing 0.09% (W/V) Sodium Azide as preservative State: Aff - Purified State: Liquid purified Ig fraction
Concentration:	lot specific
Purification:	Protein A column, followed by peptide affinity purification
Conjugation:	Unconjugated
Storage:	Store undiluted at 2-8°C for one month or (in aliquots) at -20°C for longer. Avoid repeated freezing and thawing.
Stability:	Shelf life: one year from despatch.
Gene Name:	lysine demethylase 4B
Database Link:	<a href="#">Entrez Gene 23030 Human O94953</a>
Background:	KDM4B / JMJD2B is a jumonji domain containing histone demethylase that specifically demethylates histone H3 at K9 and K36
Synonyms:	JHDM3B, KIAA0876

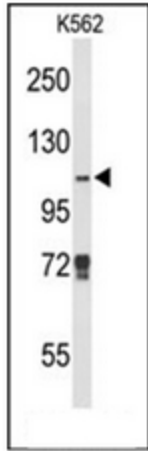


[View online »](#)

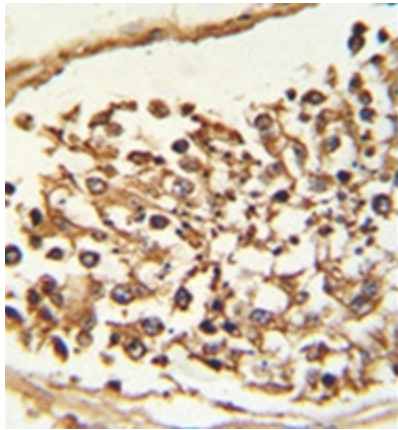
**Note:** **Molecular Weight:** 121897 Da

**Protein Families:** Druggable Genome

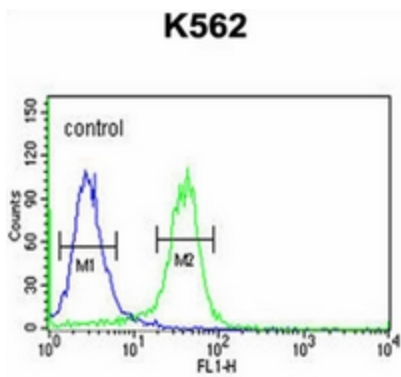
**Product images:**



Western blot analysis of JMJD2B Antibody (N-term) in K562 cell line lysates (35ug/lane). JMJD2B (arrow) was detected using the purified Pab.



Formalin-fixed and paraffin-embedded human Testis tissue reacted with JMJD2B Antibody (N-term), which was peroxidase-conjugated to the secondary antibody, followed by DAB staining.



Flow cytometric analysis of K562 cells using JMJD2B Antibody (N-term) (right histogram) compared to a negative control cell (left histogram). FITC-conjugated goat-anti-rabbit secondary antibodies were used for the analysis.