

Product datasheet for **AP52268PU-N**

KDM4B (N-term) Rabbit Polyclonal Antibody

Product data:

Product Type:	Primary Antibodies
Applications:	WB
Recommended Dilution:	ELISA: 1/1000. Western Blot: 1/100-1/500.
Reactivity:	Human
Host:	Rabbit
Isotype:	Ig
Clonality:	Polyclonal
Immunogen:	KLH conjugated synthetic peptide between 435-468 amino acids from the N-terminal region of human JMJD2B
Specificity:	This antibody recognizes Human JMJD2B / KDM4B (N-term).
Formulation:	PBS containing 0.09% (W/V) Sodium Azide as preservative State: Aff - Purified State: Liquid purified Ig fraction
Concentration:	lot specific
Purification:	Protein A column, followed by peptide affinity purification
Conjugation:	Unconjugated
Storage:	Store undiluted at 2-8°C for one month or (in aliquots) at -20°C for longer. Avoid repeated freezing and thawing.
Stability:	Shelf life: one year from despatch.
Gene Name:	lysine demethylase 4B
Database Link:	Entrez Gene 23030 Human O94953
Background:	KDM4B is a histone demethylase that specifically demethylates 'Lys-9' of histone H3, thereby playing a role in histone code. It does not demethylate histone H3 'Lys-4', H3 'Lys-27', H3 'Lys-36' nor H4 'Lys-20' and only able to demethylate trimethylated H3 'Lys-9', with a weaker activity than KDM4A, KDM4C and KDM4D. Demethylation of Lys residue generates formaldehyde and succinate.



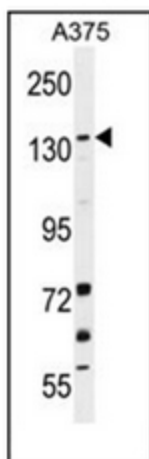
[View online »](#)

Synonyms: JHDM3B, KIAA0876

Note: **Molecular Weight:** 121897 Da

Protein Families: Druggable Genome

Product images:



Western blot analysis of JMJD2B Antibody (N-term) in A375 cell line lysates (35ug/lane). This demonstrates the JMJD2B antibody detected the JMJD2B protein (arrow).