

## Product datasheet for **AP52267PU-N**

### **KDM3B (C-term) Rabbit Polyclonal Antibody**

#### **Product data:**

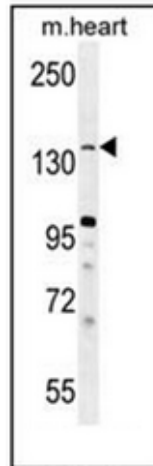
Product Type:	Primary Antibodies
Applications:	FC, WB
Recommended Dilution:	<b>ELISA:</b> 1/1000. <b>Western Blot:</b> 1/100-1/500. <b>Flow Cytometry:</b> 1/10-1/50.
Reactivity:	Human, Mouse
Host:	Rabbit
Isotype:	Ig
Clonality:	Polyclonal
Immunogen:	KLH conjugated synthetic peptide between 1335-1358 amino acids from the C-terminal region of human JMJD1B
Specificity:	This antibody recognizes Human and Mouse JMJD1B / KDM3B (C-term).
Formulation:	PBS containing 0.09% (W/V) Sodium Azide as preservative State: Purified State: Liquid purified Ig fraction
Concentration:	lot specific
Purification:	Saturated Ammonium Sulfate (SAS) precipitation followed by dialysis against PBS
Conjugation:	Unconjugated
Storage:	Store undiluted at 2-8°C for one month or (in aliquots) at -20°C for longer. Avoid repeated freezing and thawing.
Stability:	Shelf life: one year from despatch.
Gene Name:	lysine demethylase 3B
Database Link:	<a href="#">Entrez Gene 277250 Mouse</a> <a href="#">Entrez Gene 51780 Human</a> <a href="#">Q7LBC6</a>
Background:	Histone demethylase that specifically demethylates 'Lys-9' of histone H3, thereby playing a central role in histone code. Demethylation of Lys residue generates formaldehyde and succinate. May have tumor suppressor activity.
Synonyms:	5qNCA, C5orf7, JHDM2B, KIAA1082



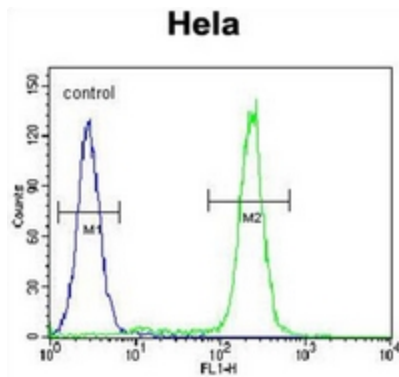
[View online »](#)

Note: **Molecular Weight:** 191;581 Da

### Product images:



Western blot analysis of JHDM2b Antibody (C-term) in mouse heart tissue lysates (35ug/lane). This demonstrates the JHDM2b antibody detected the JHDM2b protein (arrow).



Flow cytometric analysis of HeLa cells using JHDM2b Antibody (C-term) (right histogram) compared to a negative control cell (left histogram). FITC-conjugated goat-anti-rabbit secondary antibodies were used for the analysis.