

Product datasheet for **AP52265PU-N**

KDM3A / JHDM2A (KDM3A) (C-term) Rabbit Polyclonal Antibody

Product data:

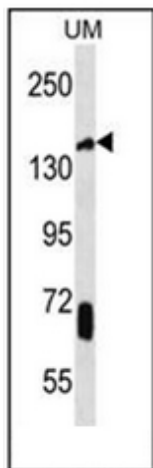
Product Type:	Primary Antibodies
Applications:	IHC, WB
Recommended Dilution:	ELISA: 1/1000. Western Blot: 1/100-1/500. Immunohistochemistry on Paraffin Sections: 1/10-1/50.
Reactivity:	Human
Host:	Rabbit
Isotype:	Ig
Clonality:	Polyclonal
Immunogen:	KLH conjugated synthetic peptide between 983-1017 amino acids from the C-terminal region of human JHDM2a.
Specificity:	This antibody recognizes Human KDM3A / JHDM2A (C-term).
Formulation:	PBS containing 0.09% (W/V) Sodium Azide as preservative State: Aff - Purified State: Liquid purified Ig fraction
Concentration:	lot specific
Purification:	Protein A column, followed by peptide affinity purification
Conjugation:	Unconjugated
Storage:	Store undiluted at 2-8°C for one month or (in aliquots) at -20°C for longer. Avoid repeated freezing and thawing.
Stability:	Shelf life: one year from despatch.
Gene Name:	lysine demethylase 3A
Database Link:	Entrez Gene 55818 Human Q9Y4C1
Background:	KDM3A is a zinc finger protein that contains a jumonji domain and may play a role in hormone-dependent transcriptional activation.
Synonyms:	JMJD1, JMJD1A, KIAA0742, TSGA



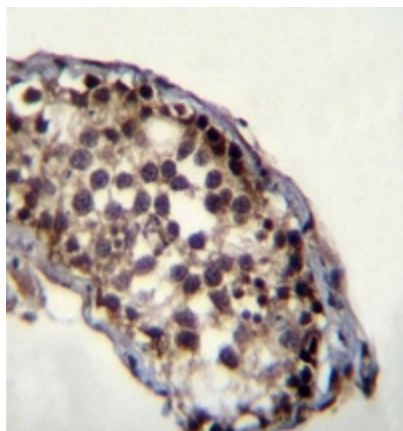
[View online »](#)

Note: **Molecular Weight:** 147341 Da

Product images:



Western blot analysis of JHDM2a Antibody (C-term) in UM cell line lysates (35ug/lane). This demonstrates the JHDM2a antibody detected the JHDM2a protein (arrow).



Immunohistochemistry analysis in formalin fixed and paraffin embedded human testis tissue reacted with JHDM2a Antibody (C-term), which was peroxidase conjugated to the secondary antibody and followed by DAB staining.