

Product datasheet for **AP52256PU-N**

ITIH5 (C-term) Rabbit Polyclonal Antibody

Product data:

Product Type:	Primary Antibodies
Applications:	IHC, WB
Recommended Dilution:	ELISA: 1/1000. Western Blot: 1/100-1/500. Immunohistochemistry on Paraffin Sections: 1/50-1/100.
Reactivity:	Human
Host:	Rabbit
Isotype:	Ig
Clonality:	Polyclonal
Immunogen:	KLH conjugated synthetic peptide between 578-606 amino acids from the C-terminal region of human ITIH5.
Specificity:	This antibody recognizes Human ITIH5 (C-term).
Formulation:	PBS containing 0.09% (W/V) Sodium Azide as preservative State: Aff - Purified State: Liquid purified Ig fraction
Concentration:	lot specific
Purification:	Protein A column, followed by peptide affinity purification
Conjugation:	Unconjugated
Storage:	Store undiluted at 2-8°C for one month or (in aliquots) at -20°C for longer. Avoid repeated freezing and thawing.
Stability:	Shelf life: one year from despatch.
Gene Name:	inter-alpha-trypsin inhibitor heavy chain family member 5
Database Link:	Entrez Gene 80760 Human Q86UX2



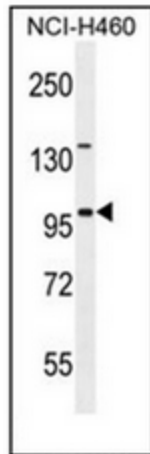
[View online »](#)

Background:

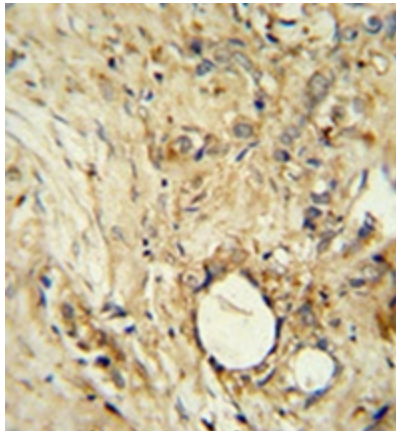
This gene encodes a heavy chain component of one of the inter-alpha-trypsin inhibitor (ITI) family members. ITI proteins are involved in extracellular matrix stabilization and in the prevention of tumor metastasis. They are also structurally related plasma serine protease inhibitors and are composed of a light chain and varying numbers of heavy chains. This family member is thought to function as a tumor suppressor in breast and thyroid cancers. Alternative splicing results in multiple transcript variants.

Synonyms:

KIAA1953

Note:**Molecular Weight:** 104576 Da**Product images:**

Western blot analysis of ITIH5 Antibody (C-term) in NCI-H460 cell line lysates (35ug/lane). This demonstrates the ITIH5 antibody detected the ITIH5 protein (arrow).



Immunohistochemistry analysis in formalin fixed and paraffin embedded human breast carcinoma reacted with, which was peroxidase conjugated to the secondary antibody and followed by DAB staining.