

Product datasheet for **AP52255PU-N**

ITIH1 (Center) Rabbit Polyclonal Antibody

Product data:

Product Type:	Primary Antibodies
Applications:	FC, WB
Recommended Dilution:	ELISA: 1/1000. Western Blot: 1/100-1/500. Flow Cytometry: 1/10-1/50.
Reactivity:	Human
Host:	Rabbit
Isotype:	Ig
Clonality:	Polyclonal
Immunogen:	KLH conjugated synthetic peptide between 613-643 amino acids from the Central region of Human ITIH1 / IGHEP1
Specificity:	This antibody recognizes Human ITIH1 / IGHEP1 (Center).
Formulation:	PBS containing 0.09% (W/V) Sodium Azide as preservative State: Aff - Purified State: Liquid purified Ig fraction
Concentration:	lot specific
Purification:	Protein A column, followed by peptide affinity purification
Conjugation:	Unconjugated
Storage:	Store undiluted at 2-8°C for one month or (in aliquots) at -20°C for longer. Avoid repeated freezing and thawing.
Stability:	Shelf life: one year from despatch.
Gene Name:	inter-alpha-trypsin inhibitor heavy chain 1
Database Link:	Entrez Gene 3697 Human P19827
Background:	The protein encoded by this gene is the heavy chain of a serine protease inhibitor that may serve to carry hyaluronan in plasma. This gene is part of a cluster of similar genes on chromosome 3. Multiple transcript variants encoding different isoforms have been found for this gene.



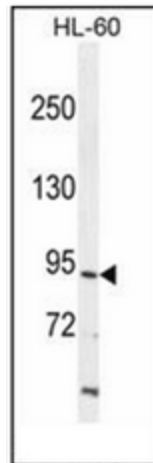
[View online »](#)

Synonyms: ITI heavy chain H1

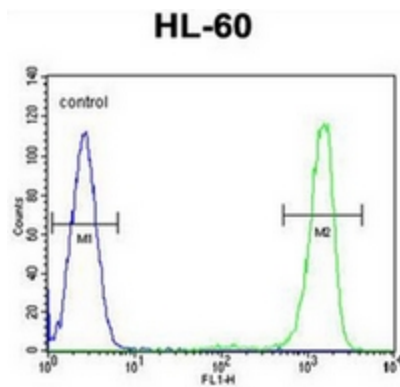
Note: **Molecular Weight:** 101389 Da

Protein Families: Transmembrane

Product images:



Western blot analysis of ITIH1 / IGHEP1 Antibody (Center) in HL-60 cell line lysates (35ug/lane). This demonstrates the ITIH1 antibody detected the ITIH1 protein (arrow).



Flow cytometric analysis of HL-60 cells using ITIH1 / IGHEP1 Antibody (Center) (right histogram) compared to a negative control cell (left histogram). FITC-conjugated goat-anti-rabbit secondary antibodies were used for the analysis.