

Product datasheet for **AP52252PU-N**

ITGA8 (C-term) Rabbit Polyclonal Antibody

Product data:

| | |
|-----------------------|-----------------------------------------------------------------------------------------------------------------------------|
| Product Type: | Primary Antibodies |
| Applications: | IHC, WB |
| Recommended Dilution: | ELISA: 1/1000. Western Blot: 1/100-1/500. Immunohistochemistry on Paraffin Sections: 1/50-1/100. |
| Reactivity: | Human |
| Host: | Rabbit |
| Isotype: | Ig |
| Clonality: | Polyclonal |
| Immunogen: | KLH conjugated synthetic peptide between 1032-1061 amino acids from the C-terminal region of human ITGA8 |
| Specificity: | This antibody recognizes Human Integrin alpha-8 / ITGA8 (C-term). |
| Formulation: | PBS containing 0.09% (W/V) Sodium Azide as preservative State: Aff - Purified State: Liquid purified Ig fraction |
| Concentration: | lot specific |
| Purification: | Protein A column, followed by peptide affinity purification |
| Conjugation: | Unconjugated |
| Storage: | Store undiluted at 2-8°C for one month or (in aliquots) at -20°C for longer. Avoid repeated freezing and thawing. |
| Stability: | Shelf life: one year from despatch. |
| Gene Name: | integrin subunit alpha 8 |
| Database Link: | Entrez Gene 8516 Human P53708 |



[View online »](#)

Background: Integrin alpha-8/beta-1 functions in the genesis of kidney and probably of other organs by regulating the recruitment of mesenchymal cells into epithelial structures. It recognizes the sequence R-G-D in a wide array of ligands including TNC, FN1, SPP1, TGFB1, TGFB3 and VTN. NPNT is probably its functional ligand in kidney genesis. Neuronal receptor for TNC it mediates cell-cell interactions and regulates neurite outgrowth of sensory and motor neurons.

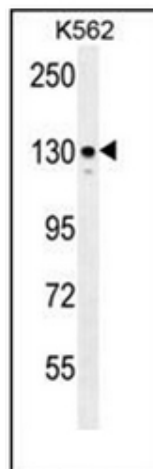
Synonyms: ITGA8

Note: **Molecular Weight:** 117474 Da

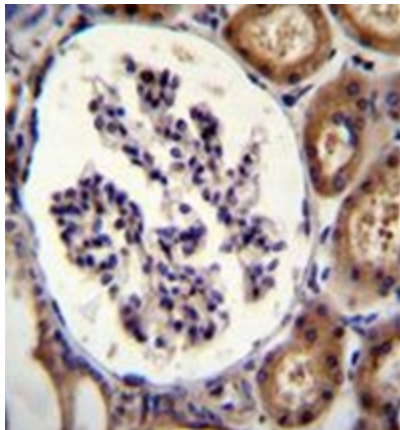
Protein Families: Druggable Genome, Transmembrane

Protein Pathways: Arrhythmogenic right ventricular cardiomyopathy (ARVC), Cell adhesion molecules (CAMs), Dilated cardiomyopathy, ECM-receptor interaction, Focal adhesion, Hypertrophic cardiomyopathy (HCM), Regulation of actin cytoskeleton

Product images:



Western blot analysis of Integrin alpha-8 / ITGA8 Antibody (C-term) in K562 cell line lysates (35ug/lane). This demonstrates the ITGA8 antibody detected the ITGA8 protein (arrow).



Immunohistochemistry analysis in formalin fixed and paraffin embedded human kidney tissue reacted with Integrin alpha-8 / ITGA8 Antibody (C-term), which was peroxidase conjugated to the secondary antibody and DAB staining.