

Product datasheet for **AP52251PU-N**

Integrin alpha 5 (ITGA5) (Center) Rabbit Polyclonal Antibody

Product data:

Product Type:	Primary Antibodies
Applications:	IHC, WB
Recommended Dilution:	ELISA: 1/1000. Western Blot: 1/100-1/500. Immunohistochemistry on Paraffin Sections: 1/10-1/50.
Reactivity:	Human
Host:	Rabbit
Isotype:	Ig
Clonality:	Polyclonal
Immunogen:	KLH conjugated synthetic peptide between 574-602 amino acids from the Central region of Human CD49e / ITGA5
Specificity:	This antibody recognizes Human CD49e / ITGA5 (Center).
Formulation:	PBS containing 0.09% (W/V) Sodium Azide as preservative State: Aff - Purified State: Liquid purified Ig fraction
Concentration:	lot specific
Purification:	Protein A column, followed by peptide affinity purification
Conjugation:	Unconjugated
Storage:	Store undiluted at 2-8°C for one month or (in aliquots) at -20°C for longer. Avoid repeated freezing and thawing.
Stability:	Shelf life: one year from despatch.
Gene Name:	integrin subunit alpha 5
Database Link:	Entrez Gene 3678 Human P08648



[View online »](#)

Background: The product of this gene belongs to the integrin alpha chain family. Integrins are heterodimeric integral membrane proteins composed of an alpha chain and a beta chain. This gene encodes the integrin alpha 5 chain. Alpha chain 5 undergoes post-translational cleavage in the extracellular domain to yield disulfide-linked light and heavy chains that join with beta 1 to form a fibronectin receptor. In addition to adhesion, integrins are known to participate in cell-surface mediated signalling. [provided by RefSeq].

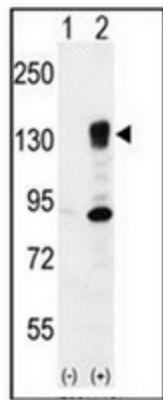
Synonyms: Integrin alpha-5, Fibronectin receptor subunit alpha, Integrin alpha-F, VLA-5, VLA5, FNRA

Note: **Molecular Weight:** 114536 Da

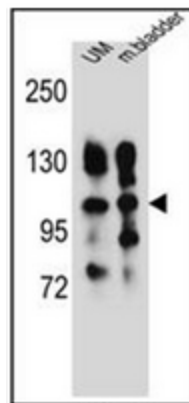
Protein Families: Druggable Genome, ES Cell Differentiation/IPS, Transmembrane

Protein Pathways: Arrhythmogenic right ventricular cardiomyopathy (ARVC), Dilated cardiomyopathy, ECM-receptor interaction, Focal adhesion, Hematopoietic cell lineage, Hypertrophic cardiomyopathy (HCM), Regulation of actin cytoskeleton

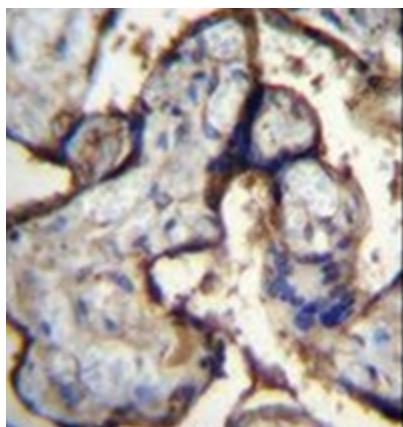
Product images:



Western blot analysis of ITGA5 (arrow) using CD49e / ITGA5 Antibody (Center). 293 cell lysates (2 ug/lane) either nontransfected (Lane 1) or transiently transfected (Lane 2) with the ITGA5 gene.



Western blot analysis of CD49e / ITGA5 Antibody (Center) in human uterine tumor and mouse bladder tissue lysates (35ug/lane). This demonstrates the ITGA5 antibody detected the ITGA5 protein (arrow).



Immunohistochemistry analysis in formalin fixed and paraffin embedded human placenta tissue reacted with CD49e / ITGA5 Antibody (Center) followed by peroxidase conjugation of the secondary antibody and DAB staining.