

## Product datasheet for **AP52250PU-N**

### CD49b (ITGA2) (C-term) Rabbit Polyclonal Antibody

#### Product data:

Product Type:	Primary Antibodies
Applications:	WB
Recommended Dilution:	<b>ELISA:</b> 1/1000. <b>Western Blot:</b> 1/100-1/500.
Reactivity:	Human
Host:	Rabbit
Isotype:	Ig
Clonality:	Polyclonal
Immunogen:	KLH conjugated synthetic peptide between 1029~1058 amino acids from the C-terminal region of human CD49b / ITGA2
Specificity:	This antibody recognizes Human CD49b / ITGA2 (C-term).
Formulation:	PBS containing 0.09% (W/V) Sodium Azide as preservative State: Aff - Purified State: Liquid purified Ig fraction
Concentration:	lot specific
Purification:	Protein A column, followed by peptide affinity purification
Conjugation:	Unconjugated
Storage:	Store undiluted at 2-8°C for one month or (in aliquots) at -20°C for longer. Avoid repeated freezing and thawing.
Stability:	Shelf life: one year from despatch.
Gene Name:	integrin subunit alpha 2
Database Link:	<a href="#">Entrez Gene 3673 Human P17301</a>
Background:	ITGA2 is a protein that belongs to the integrin alpha chain family. Integrins are heterodimeric integral membrane glycoproteins composed of a distinct alpha chain and a common beta chain. They are found on a wide variety of cell types including, T cells, fibroblasts and platelets. Integrins are involved in cell adhesion and also participate in cell-surface mediated signalling.



[View online »](#)

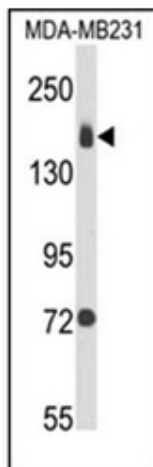
**Synonyms:** Integrin alpha-2, ITGA-2, VLA-2 alpha, VLA2, GPIa, Collagen Receptor

**Note:** **Molecular Weight:** 129295 Da

**Protein Families:** Druggable Genome, Transmembrane

**Protein Pathways:** Arrhythmogenic right ventricular cardiomyopathy (ARVC), Dilated cardiomyopathy, ECM-receptor interaction, Focal adhesion, Hematopoietic cell lineage, Hypertrophic cardiomyopathy (HCM), Pathways in cancer, Regulation of actin cytoskeleton, Small cell lung cancer

### Product images:



Western blot analysis of CD49b / ITGA2 Antibody (C-term) in MDA-MB231 cell line lysates (35ug/lane). ITGA2 (arrow) was detected using the purified Pab.