

## Product datasheet for **AP52244PU-N**

### Islet 1 (ISL1) (Center) Rabbit Polyclonal Antibody

#### Product data:

Product Type:	Primary Antibodies
Applications:	WB
Recommended Dilution:	<b>ELISA:</b> 1/1000. <b>Western Blot:</b> 1/100-1/500.
Reactivity:	Human, Mouse
Host:	Rabbit
Isotype:	Ig
Clonality:	Polyclonal
Immunogen:	KLH conjugated synthetic peptide between 155-185 amino acids from the Central region of human Islet-1 / ISL1
Specificity:	This antibody recognizes Human and Mouse Islet-1 / ISL1 (Center).
Formulation:	PBS containing 0.09% (W/V) Sodium Azide as preservative State: Aff - Purified State: Liquid purified Ig fraction
Concentration:	lot specific
Purification:	Protein A column, followed by peptide affinity purification
Conjugation:	Unconjugated
Storage:	Store undiluted at 2-8°C for one month or (in aliquots) at -20°C for longer. Avoid repeated freezing and thawing.
Stability:	Shelf life: one year from despatch.
Gene Name:	ISL LIM homeobox 1
Database Link:	<a href="#">Entrez Gene 16392 Mouse</a> <a href="#">Entrez Gene 3670 Human</a> <a href="#">P61371</a>



[View online »](#)

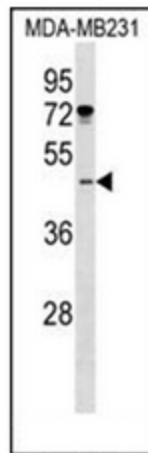
**Background:** ISL1 is a member of the LIM/homeodomain family of transcription factors. The encoded protein binds to the enhancer region of the insulin gene, among others, and may play an important role in regulating insulin gene expression. The encoded protein is central to the development of pancreatic cell lineages and may also be required for motor neuron generation. Mutations in this gene have been associated with maturity-onset diabetes of the young.

**Synonyms:** Isl-1; islet-1; ISLET1

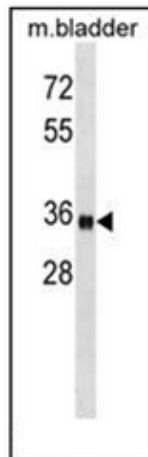
**Note:** **Molecular Weight:** 39036 Da

**Protein Families:** ES Cell Differentiation/IPS, Transcription Factors

### Product images:



Western blot analysis of Islet-1 / ISL1 Antibody (Center) in MDA-MB231 cell line lysates (35ug/lane). This demonstrates the ISL1 antibody detected the ISL1 protein (arrow).



Western blot analysis of Islet-1 / ISL1 Antibody (Center) in mouse bladder tissue lysates (35ug/lane). This demonstrates the ISL1 antibody detected the ISL1 protein (arrow).