

## Product datasheet for **AP52242PU-N**

### **HBLD1 (ISCA2) (Center) Rabbit Polyclonal Antibody**

#### **Product data:**

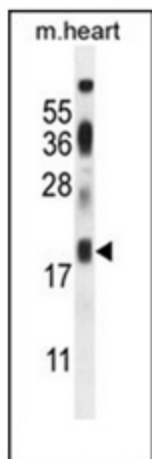
Product Type:	Primary Antibodies
Applications:	IHC, WB
Recommended Dilution:	<b>ELISA:</b> 1/1000. <b>Western Blot:</b> 1/1000. <b>Immunohistochemistry on Paraffin Sections:</b> 1/50-1/100.
Reactivity:	Human, Mouse
Host:	Rabbit
Isotype:	Ig
Clonality:	Polyclonal
Immunogen:	KLH conjugated synthetic peptide between 72-101 amino acids from the Central region of human ISCA2 / HBLD1
Specificity:	This antibody recognizes Human and Mouse ISCA2 / HBLD1 (Center).
Formulation:	PBS containing 0.09% (W/V) Sodium Azide as preservative State: Aff - Purified State: Liquid purified Ig fraction
Concentration:	lot specific
Purification:	Protein A column, followed by peptide affinity purification
Conjugation:	Unconjugated
Storage:	Store undiluted at 2-8°C for one month or (in aliquots) at -20°C for longer. Avoid repeated freezing and thawing.
Stability:	Shelf life: one year from despatch.
Gene Name:	iron-sulfur cluster assembly 2
Database Link:	<a href="#">Entrez Gene 74316 Mouse</a> <a href="#">Entrez Gene 122961 Human</a> <a href="#">Q86U28</a>
Background:	ISCA2 is involved in the assembly of mitochondrial iron-sulfur proteins. Probably involved in the binding of an intermediate of Fe/S cluster assembly (By similarity).
Synonyms:	c14_5557; HBLD1; ISA2



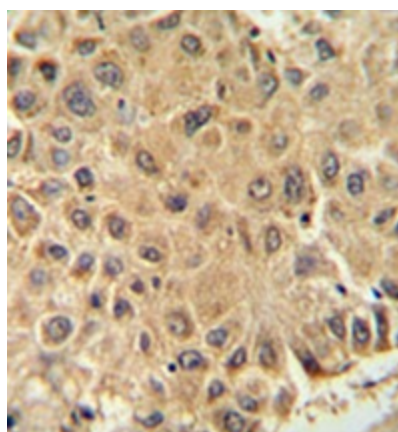
[View online »](#)

Note: **Molecular Weight:** 16476 Da

**Product images:**



Western blot analysis of ISCA2 / HBLD1 Antibody (Center) in mouse heart tissue lysates (35ug/lane).



Immunohistochemistry analysis in formalin fixed and paraffin embedded human prostate carcinoma reacted with ISCA2 / HBLD1 Antibody (Center), which was peroxidase conjugated to the secondary antibody and followed by DAB staining.