

## Product datasheet for **AP52241PU-N**

### IRX5 (C-term) Rabbit Polyclonal Antibody

#### Product data:

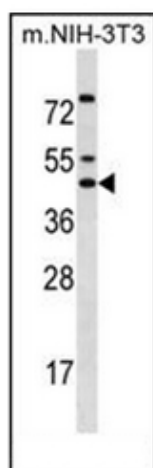
Product Type:	Primary Antibodies
Applications:	WB
Recommended Dilution:	<b>ELISA:</b> 1/1000. <b>Western Blot:</b> 1/100-1/500.
Reactivity:	Human, Mouse
Host:	Rabbit
Isotype:	Ig
Clonality:	Polyclonal
Immunogen:	KLH conjugated synthetic peptide between 454-483 amino acids from the C-terminal region of human IRX5 / IRXB2
Specificity:	This antibody recognizes Human and Mouse IRX5 / IRXB2 (C-term).
Formulation:	PBS containing 0.09% (W/V) Sodium Azide as preservative State: Aff - Purified State: Liquid purified Ig fraction
Concentration:	lot specific
Purification:	Protein A column, followed by peptide affinity purification
Conjugation:	Unconjugated
Storage:	Store undiluted at 2-8°C for one month or (in aliquots) at -20°C for longer. Avoid repeated freezing and thawing.
Stability:	Shelf life: one year from despatch.
Gene Name:	iroquois homeobox 5
Database Link:	<a href="#">Entrez Gene 54352 Mouse</a> <a href="#">Entrez Gene 10265 Human</a> <a href="#">P78411</a>
Background:	IRX5 is a member of the Iroquois homeobox gene family. Members of this family appear to play multiple roles during pattern formation of vertebrate embryos.
Synonyms:	IRX2A, IRX-2A, Iroquois homeobox protein 5, IRX-5
Note:	<b>Molecular Weight:</b> 50361 Da



[View online »](#)

Protein Families: Transcription Factors

### Product images:



Western blot analysis of IRX5 / IRXB2 Antibody (C-term) in mouse NIH-3T3 cell line lysates (35ug/lane). This demonstrates the IRX5 antibody detected the IRX5 protein (arrow).