

Product datasheet for **AP52240PU-N**

IRX2 (Center) Rabbit Polyclonal Antibody

Product data:

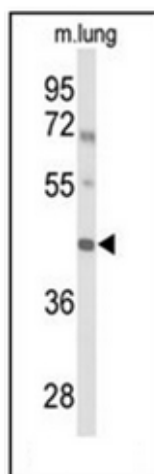
Product Type:	Primary Antibodies
Applications:	WB
Recommended Dilution:	ELISA: 1/1000. Western Blot: 1/100-1/500.
Reactivity:	Human, Mouse
Host:	Rabbit
Isotype:	Ig
Clonality:	Polyclonal
Immunogen:	KLH conjugated synthetic peptide between 187~216 amino acids from the Central region of Human IRX2
Specificity:	This antibody recognizes Human and Mouse IRX2 / IRXA2 (Center).
Formulation:	PBS containing 0.09% (W/V) Sodium Azide as preservative State: Aff - Purified State: Liquid purified Ig fraction
Concentration:	lot specific
Purification:	Protein A column, followed by peptide affinity purification
Conjugation:	Unconjugated
Storage:	Store undiluted at 2-8°C for one month or (in aliquots) at -20°C for longer. Avoid repeated freezing and thawing.
Stability:	Shelf life: one year from despatch.
Gene Name:	iroquois homeobox 2
Database Link:	Entrez Gene 16372 Mouse Entrez Gene 153572 Human Q9BZ11
Background:	IRX2 is a member of the Iroquois homeobox gene family. Members of this family appear to play multiple roles during pattern formation of vertebrate embryos.
Synonyms:	Iroquois homeobox protein 2, IRX-2
Note:	Molecular Weight: 49129 Da



[View online »](#)

Protein Families: Transcription Factors

Product images:



Western blot analysis of IRX2 / IRXA2 Antibody (Center) in mouse lung tissue lysates (35ug/lane). IRX2 (arrow) was detected using the purified Pab.