

## Product datasheet for **AP52235PU-N**

### IRF2 (Center) Rabbit Polyclonal Antibody

#### Product data:

|                       |  |
|-----------------------|--|
| Product Type:         | Primary Antibodies   |
| Applications:         | WB   |
| Recommended Dilution: | <b>ELISA:</b> 1/1000.<br><b>Western Blot:</b> 1/100-1/500.   |
| Reactivity:           | Human, Mouse   |
| Host:                 | Rabbit   |
| Isotype:              | Ig   |
| Clonality:            | Polyclonal   |
| Immunogen:            | KLH conjugated synthetic peptide between 232-263 amino acids from the Central region of Human IRF2   |
| Specificity:          | This antibody recognizes Human and Mouse IRF2 (Center).  |
| Formulation:          | PBS containing 0.09% (W/V) Sodium Azide as preservative<br>State: Aff - Purified<br>State: Liquid purified Ig fraction   |
| Concentration:        | lot specific   |
| Purification:         | Protein A column, followed by peptide affinity purification  |
| Conjugation:          | Unconjugated   |
| Storage:              | Store undiluted at 2-8°C for one month or (in aliquots) at -20°C for longer.<br>Avoid repeated freezing and thawing.   |
| Stability:            | Shelf life: one year from despatch.  |
| Gene Name:            | interferon regulatory factor 2   |
| Database Link:        | <a href="#">Entrez Gene 16363 Mouse</a> <a href="#">Entrez Gene 3660 Human</a><br><a href="#">P14316</a>   |
| Background:           | IRF2 encodes interferon regulatory factor 2, a member of the interferon regulatory transcription factor (IRF) family. IRF2 competitively inhibits the IRF1-mediated transcriptional activation of interferons alpha and beta, and presumably other genes that employ IRF1 for transcription activation. However, IRF2 also functions as a transcriptional activator of histone H4. [provided by RefSeq]. |



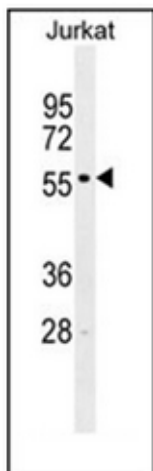
[View online »](#)

**Synonyms:** Interferon regulatory factor 2, IRF-2

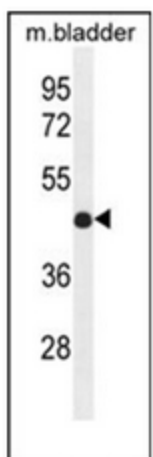
**Note:** **Molecular Weight:** 39354 Da

**Protein Families:** Druggable Genome, Transcription Factors

**Product images:**



Western blot analysis of IRF2 Antibody (Center) in Jurkat cell line lysates (35ug/lane). This demonstrates the IRF2 antibody detected the IRF2 protein (arrow).



Western blot analysis of IRF2 Antibody (Center) in mouse bladder tissue lysates (35ug/lane). This demonstrates the IRF2 antibody detected the IRF2 protein (arrow).