

## Product datasheet for **AP52234PU-N**

### IRF1 (C-term) Rabbit Polyclonal Antibody

#### Product data:

Product Type:	Primary Antibodies
Applications:	WB
Recommended Dilution:	<b>ELISA:</b> 1/1000. <b>Western Blot:</b> 1/100-1/500.
Reactivity:	Human
Host:	Rabbit
Isotype:	Ig
Clonality:	Polyclonal
Immunogen:	KLH conjugated synthetic peptide between 266-293 amino acids from the C-terminal region of Human IRF1
Specificity:	This antibody recognizes Human IRF1 (C-term).
Formulation:	PBS containing 0.09% (W/V) Sodium Azide as preservative State: Aff - Purified State: Liquid purified Ig fraction
Concentration:	lot specific
Purification:	Protein A column, followed by peptide affinity purification
Conjugation:	Unconjugated
Storage:	Store undiluted at 2-8°C for one month or (in aliquots) at -20°C for longer. Avoid repeated freezing and thawing.
Stability:	Shelf life: one year from despatch.
Gene Name:	interferon regulatory factor 1
Database Link:	<a href="#">Entrez Gene 3659 Human P10914</a>



[View online »](#)

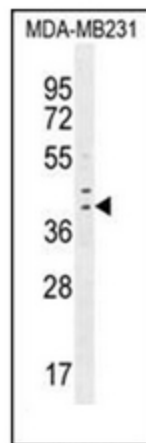
**Background:** IRF1 encodes interferon regulatory factor 1, a member of the interferon regulatory transcription factor (IRF) family. IRF1 serves as an activator of interferons alpha and beta transcription, and in mouse it has been shown to be required for double-stranded RNA induction of these genes. IRF1 also functions as a transcription activator of genes induced by interferons alpha, beta, and gamma. Further, IRF1 has been shown to play roles in regulating apoptosis and tumor-suppression.

**Synonyms:** Interferon regulatory factor 1, IRF-1

**Note:** **Molecular Weight:** 36502 Da

**Protein Families:** Druggable Genome, Transcription Factors

### Product images:



Western blot analysis of IRF1 Antibody (C-term) in MDA-MB231 cell line lysates (35ug/lane). This demonstrates the IRF1 antibody detected the IRF1 protein (arrow).