

Product datasheet for **AP52230PU-N**

IQCJ (C-term) Rabbit Polyclonal Antibody

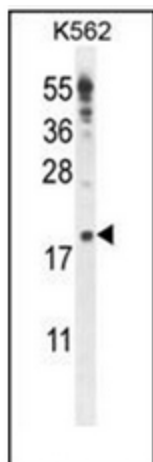
Product data:

Product Type:	Primary Antibodies
Applications:	FC, IHC, WB
Recommended Dilution:	ELISA: 1/1000. Western Blot: 1/100-1/500. Flow Cytometry: 1/10-1/50. Immunohistochemistry on Paraffin Sections: 1/50-1/100.
Reactivity:	Human, Mouse
Host:	Rabbit
Isotype:	Ig
Clonality:	Polyclonal
Immunogen:	KLH conjugated synthetic peptide between 101-130 amino acids from the C-terminal region of human IQCJ.
Specificity:	This antibody recognizes Human and Mouse IQCJ (C-term).
Formulation:	PBS containing 0.09% (W/V) Sodium Azide as preservative State: Aff - Purified State: Liquid purified Ig fraction
Concentration:	lot specific
Purification:	Protein A column, followed by peptide affinity purification
Conjugation:	Unconjugated
Storage:	Store undiluted at 2-8°C for one month or (in aliquots) at -20°C for longer. Avoid repeated freezing and thawing.
Stability:	Shelf life: one year from despatch.
Gene Name:	IQ motif containing J
Database Link:	Entrez Gene 654502 Human Q1A5X6
Synonyms:	IQ domain-containing protein J
Note:	Molecular Weight: 18226 Da

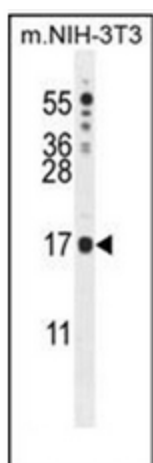


[View online »](#)

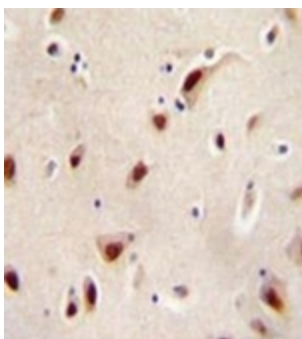
Product images:



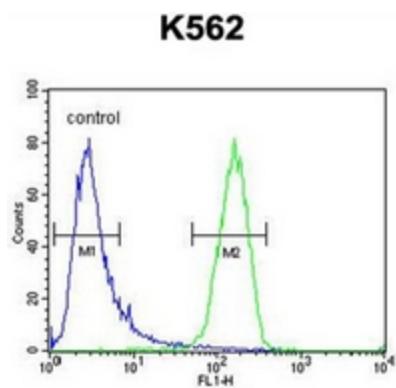
Western blot analysis of IQCJ Antibody (C-term) in K562 cell line lysates (35ug/lane). This demonstrates the IQCJ antibody detected the IQCJ protein (arrow).



Western blot analysis of IQCJ Antibody (C-term) in mouse NIH-3T3 cell line lysates (35ug/lane). This demonstrates the IQCJ antibody detected the IQCJ protein (arrow).



Immunohistochemistry analysis in formalin fixed and paraffin embedded human brain tissue reacted with IQCJ Antibody (C-term) followed by peroxidase conjugation of the secondary antibody and DAB staining.



Flow cytometric analysis of K562 cells using IQCJ Antibody (C-term) (right histogram) compared to a negative control cell (left histogram). FITC-conjugated goat-anti-rabbit secondary antibodies were used for the analysis.