

## Product datasheet for **AP52228PU-N**

### **IQCF1 (N-term) Rabbit Polyclonal Antibody**

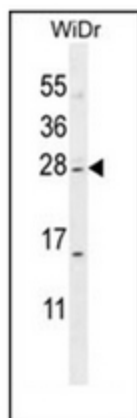
#### **Product data:**

|                       |  |
|-----------------------|--|
| Product Type:         | Primary Antibodies   |
| Applications:         | WB   |
| Recommended Dilution: | <b>ELISA:</b> 1/1000.<br><b>Western Blot:</b> 1/100-1/500.   |
| Reactivity:           | Human  |
| Host:                 | Rabbit   |
| Isotype:              | Ig   |
| Clonality:            | Polyclonal   |
| Immunogen:            | KLH conjugated synthetic peptide between 1-30 amino acids from the N-terminal region of human IQCF1                    |
| Specificity:          | This antibody recognizes Human IQCF1 (N-term).   |
| Formulation:          | PBS containing 0.09% (W/V) Sodium Azide as preservative<br>State: Aff - Purified<br>State: Liquid purified Ig fraction |
| Concentration:        | lot specific   |
| Purification:         | Protein A column, followed by peptide affinity purification  |
| Conjugation:          | Unconjugated   |
| Storage:              | Store undiluted at 2-8°C for one month or (in aliquots) at -20°C for longer.<br>Avoid repeated freezing and thawing.   |
| Stability:            | Shelf life: one year from despatch.  |
| Gene Name:            | IQ motif containing F1   |
| Database Link:        | <a href="#">Entrez Gene 132141 Human Q8N6M8</a>  |
| Synonyms:             | IQ domain-containing protein F1  |
| Note:                 | <b>Molecular Weight:</b> 23699 Da  |



[View online »](#)

## Product images:



Western blot analysis of IQCF1 Antibody (N-term) in WiDr cell line lysates (35ug/lane). This demonstrates the IQCF1 antibody detected the IQCF1 protein (arrow).