

Product datasheet for **AP52225PU-N**

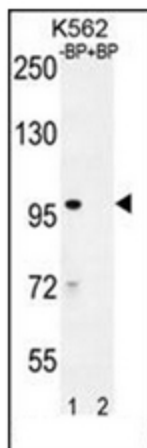
IQCA1 (C-term) Rabbit Polyclonal Antibody

Product data:

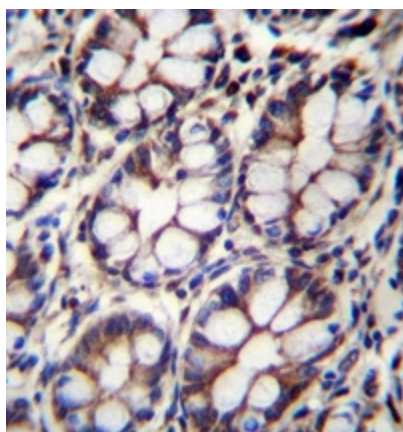
Product Type:	Primary Antibodies
Applications:	IHC, WB
Recommended Dilution:	ELISA: 1/1000. Western Blot: 1/100-1/500. Immunohistochemistry on Paraffin Sections: 1/50-1/100.
Reactivity:	Human
Host:	Rabbit
Isotype:	Ig
Clonality:	Polyclonal
Immunogen:	KLH conjugated synthetic peptide between 791-822 amino acids from the C-terminal region of Human IQCA1
Specificity:	This antibody recognizes Human IQCA1 (C-term).
Formulation:	PBS containing 0.09% (W/V) Sodium Azide as preservative State: Aff - Purified State: Liquid purified Ig fraction
Concentration:	lot specific
Purification:	Protein A column, followed by peptide affinity purification
Conjugation:	Unconjugated
Storage:	Store undiluted at 2-8°C for one month or (in aliquots) at -20°C for longer. Avoid repeated freezing and thawing.
Stability:	Shelf life: one year from despatch.
Gene Name:	IQ motif containing with AAA domain 1
Database Link:	Entrez Gene 79781 Human Q86XH1
Synonyms:	4930465P12Rik; FLJ22527; IQCA
Note:	Molecular Weight: 95341 Da



[View online »](#)

Product images:

Western blot analysis of IQCA1 Antibody (C-term) pre-incubated without (lane 1) and with (lane 2) blocking peptide in K562 cell line lysate. IQCA1 Antibody (C-term) (arrow) was detected using the purified Pab (1:60/250 dilution).



Immunohistochemistry analysis in formalin fixed and paraffin embedded human rectum tissue reacted with followed by peroxidase conjugation of the secondary antibody and DAB staining.