

Product datasheet for **AP52222PU-N**

IPO11 (C-term) Rabbit Polyclonal Antibody

Product data:

Product Type:	Primary Antibodies
Applications:	WB
Recommended Dilution:	ELISA: 1/1000. Western Blot: 1/100-1/500.
Reactivity:	Human
Host:	Rabbit
Isotype:	Ig
Clonality:	Polyclonal
Immunogen:	KLH conjugated synthetic peptide between 906–970 amino acids from the C-terminal region of Human RanBP11 / Importin-11
Specificity:	This antibody recognizes Human RanBP11 / Importin-11 (C-term).
Formulation:	PBS containing 0.09% (W/V) Sodium Azide as preservative State: Aff - Purified State: Liquid purified Ig fraction
Concentration:	lot specific
Purification:	Protein A column, followed by peptide affinity purification
Conjugation:	Unconjugated
Storage:	Store undiluted at 2-8°C for one month or (in aliquots) at -20°C for longer. Avoid repeated freezing and thawing.
Stability:	Shelf life: one year from despatch.
Gene Name:	importin 11
Database Link:	Entrez Gene 51194 Human Q9UI26



[View online »](#)

Background:

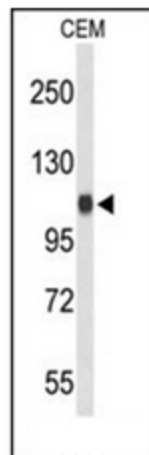
IPO11 functions in nuclear protein import as nuclear transport receptor. It serves as receptor for nuclear localization signals (NLS) in cargo substrates and is thought to mediate docking of the importin/substrate complex to the nuclear pore complex (NPC) through binding to nucleoporin and the complex is subsequently translocated through the pore by an energy requiring, Ran-dependent mechanism. At the nucleoplasmic side of the NPC, Ran binds to the importin, the importin/substrate complex dissociates and importin is re-exported from the nucleus to the cytoplasm where GTP hydrolysis releases Ran. The directionality of nuclear import is thought to be conferred by an asymmetric distribution of the GTP- and GDP-bound forms of Ran between the cytoplasm and nucleus (By similarity). It mediates the nuclear import of UBE2E3, and of RPL12 (By similarity).

Synonyms:

Imp11, IPO11, Ran-binding protein 11

Note:

Molecular Weight: 112535 Da

Product images:

Western blot analysis of RanBP11 / Importin-11 Antibody (C-term) in CEM cell line lysates (35ug/lane).