

Product datasheet for **AP52220PU-N**

IP6K1 (N-term) Rabbit Polyclonal Antibody

Product data:

Product Type:	Primary Antibodies
Applications:	WB
Recommended Dilution:	ELISA: 1/1000. Western Blot: 1/100-1/500.
Reactivity:	Human
Host:	Rabbit
Isotype:	Ig
Clonality:	Polyclonal
Immunogen:	KLH conjugated synthetic peptide between 85-115 amino acids from the N-terminal region of Human InsP6 kinase 1 / IP6K1
Specificity:	This antibody recognizes Human InsP6 kinase 1 / IP6K1 (N-term).
Formulation:	PBS containing 0.09% (W/V) Sodium Azide as preservative State: Aff - Purified State: Liquid purified Ig fraction
Concentration:	lot specific
Purification:	Protein A column, followed by peptide affinity purification
Conjugation:	Unconjugated
Storage:	Store undiluted at 2-8°C for one month or (in aliquots) at -20°C for longer. Avoid repeated freezing and thawing.
Stability:	Shelf life: one year from despatch.
Gene Name:	inositol hexakisphosphate kinase 1
Database Link:	Entrez Gene 9807 Human Q92551
Background:	IP6K1 is a protein that belongs to the inositol phosphokinase (IPK) family. This protein is likely responsible for the conversion of inositol hexakisphosphate (InsP6) to diphosphoinositol pentakisphosphate (InsP7/PP-InsP5). It may also convert 1,3,4,5,6-pentakisphosphate (InsP5) to PP-InsP4. Alternative splicing occurs for this gene; however, the full-length nature of all transcript variants has not yet been described.



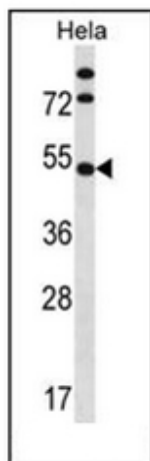
[View online »](#)

Synonyms: IHPK1, KIAA0263, Inositol hexaphosphate kinase 1

Note: **Molecular Weight:** 50236 Da

Protein Families: Druggable Genome

Product images:



Western blot analysis of IP6K1 Antibody (N-term) in HeLa cell line lysates (35ug/lane). This demonstrates the IP6K1 antibody detected the IP6K1 protein (arrow).