

## Product datasheet for **AP52219PU-N**

### INTS1 (N-term) Rabbit Polyclonal Antibody

#### Product data:

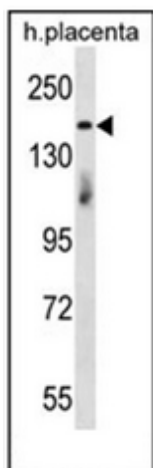
Product Type:	Primary Antibodies
Applications:	WB
Recommended Dilution:	<b>ELISA:</b> 1/1000. <b>Western Blot:</b> 1/100-1/500.
Reactivity:	Human
Host:	Rabbit
Isotype:	Ig
Clonality:	Polyclonal
Immunogen:	KLH conjugated synthetic peptide selected from the N-terminal region of Human INTS1
Specificity:	This antibody recognizes Human INTS1 (N-term).
Formulation:	PBS containing 0.09% (W/V) Sodium Azide as preservative State: Aff - Purified State: Liquid purified Ig fraction
Concentration:	lot specific
Purification:	Protein A column, followed by peptide affinity purification
Conjugation:	Unconjugated
Storage:	Store undiluted at 2-8°C for one month or (in aliquots) at -20°C for longer. Avoid repeated freezing and thawing.
Stability:	Shelf life: one year from despatch.
Gene Name:	integrator complex subunit 1
Database Link:	<a href="#">Entrez Gene 26173 Human Q8N201</a>
Background:	INTS1 is a subunit of the Integrator complex, which associates with the C-terminal domain of RNA polymerase II large subunit (POLR2A; MIM 180660) and mediates 3-prime end processing of small nuclear RNAs U1 (RNU1; MIM 180680) and U2 (RNU2; MIM 180690) (Baillat et al., 2005 [PubMed 16239144]).
Synonyms:	Integrator complex subunit 1, Int1, KIAA1440



[View online »](#)

Note: **Molecular Weight:** 244297 Da

**Product images:**



Western blot analysis of INTS1 Antibody in human placenta tissue lysates (35ug/lane). This demonstrates the INTS1 antibody detected the INTS1 protein (arrow).