

Product datasheet for **AP52218PU-N**

INTS10 (C-term) Rabbit Polyclonal Antibody

Product data:

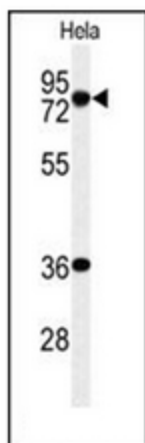
| | |
|-----------------------|--|
| Product Type: | Primary Antibodies |
| Applications: | FC, WB |
| Recommended Dilution: | ELISA: 1/1000. Western Blot: 1/100-1/500. Flow Cytometry: 1/10-1/50. |
| Reactivity: | Human |
| Host: | Rabbit |
| Isotype: | Ig |
| Clonality: | Polyclonal |
| Immunogen: | KLH conjugated synthetic peptide between 523~553 amino acids from the C-terminal region of Human INTS10 |
| Specificity: | This antibody recognizes Human INTS10 (C-term). |
| Formulation: | PBS containing 0.09% (W/V) Sodium Azide as preservative State: Aff - Purified State: Liquid purified Ig fraction |
| Concentration: | lot specific |
| Purification: | Protein A column, followed by peptide affinity purification |
| Conjugation: | Unconjugated |
| Storage: | Store undiluted at 2-8°C for one month or (in aliquots) at -20°C for longer. Avoid repeated freezing and thawing. |
| Stability: | Shelf life: one year from despatch. |
| Gene Name: | integrator complex subunit 10 |
| Database Link: | Entrez Gene 55174 Human Q9NVR2 |
| Background: | INTS10 is a subunit of the Integrator complex, which associates with the C-terminal domain of RNA polymerase II large subunit (POLR2A; MIM 180660) and mediates 3-prime end processing of small nuclear RNAs U1. |
| Synonyms: | Integrator complex subunit 10, C8orf35 |



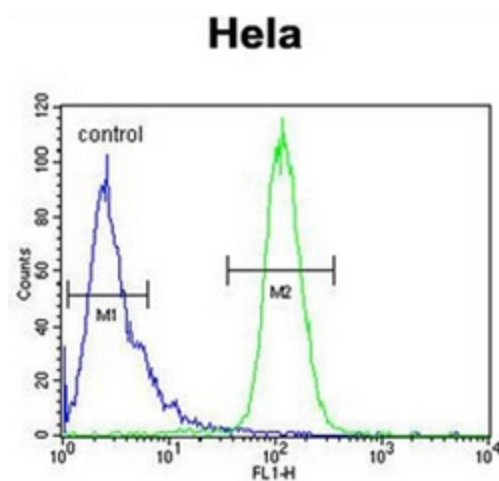
[View online »](#)

Note: **Molecular Weight:** 82236 Da

Product images:



Western blot analysis of INTS10 Antibody (C-term) in HeLa cell line lysates (35ug/lane). INTS10 (arrow) was detected using the purified Pab.



Flow cytometric analysis of HeLa cells using INTS10 Antibody (C-term) (right histogram) compared to a negative control cell (left histogram). FITC-conjugated goat-anti-rabbit secondary antibodies were used for the analysis.