

## Product datasheet for **AP52217PU-N**

### INSC (C-term) Rabbit Polyclonal Antibody

#### Product data:

Product Type:	Primary Antibodies
Applications:	IHC, WB
Recommended Dilution:	<b>ELISA:</b> 1/1000. <b>Western Blot:</b> 1/100-1/500. <b>Immunohistochemistry on Paraffin Sections:</b> 1/50-1/100.
Reactivity:	Human, Mouse
Host:	Rabbit
Isotype:	Ig
Clonality:	Polyclonal
Immunogen:	KLH conjugated synthetic peptide between 416-445 amino acids from the C-terminal region of human INSC
Specificity:	This antibody recognizes Human and Mouse INSC (C-term).
Formulation:	PBS containing 0.09% (W/V) Sodium Azide as preservative State: Aff - Purified State: Liquid purified Ig fraction
Concentration:	lot specific
Purification:	Protein A column, followed by peptide affinity purification
Conjugation:	Unconjugated
Storage:	Store undiluted at 2-8°C for one month or (in aliquots) at -20°C for longer. Avoid repeated freezing and thawing.
Stability:	Shelf life: one year from despatch.
Gene Name:	inscuteable homolog (Drosophila)
Database Link:	<a href="#">Entrez Gene 387755 Human</a> <a href="#">Q1MX18</a>
Background:	In Drosophila, neuroblasts divide asymmetrically into another neuroblast at the apical side and a smaller ganglion mother cell on the basal side. Cell polarization is precisely regulated by 2 apically localized multiprotein signaling complexes that are tethered by Inscuteable, which regulates their apical localization (Izaki et al., 2006 [PubMed 16458856]).

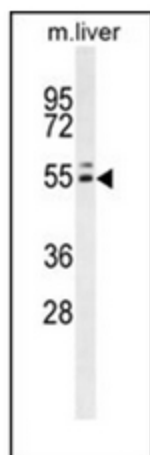


[View online »](#)

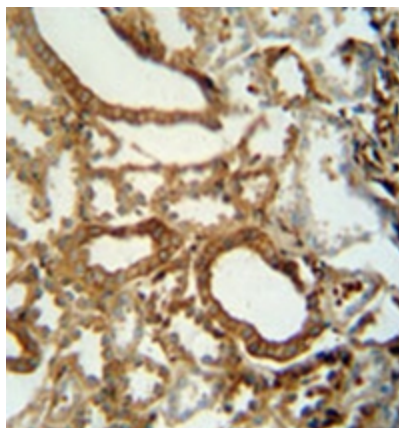
Synonyms: Protein inscuteable homolog

Note: **Molecular Weight:** 63469 Da

**Product images:**



Western blot analysis of INSC Antibody (C-term) in mouse liver tissue lysates (35ug/lane). This demonstrates the INSC antibody detected the INSC protein (arrow).



Immunohistochemistry analysis in formalin fixed and paraffin embedded human kidney tissue reacted with INSC Antibody (C-term) followed by peroxidase conjugation of the secondary antibody and DAB staining.