

Product datasheet for **AP52216PU-N**

INSC (Center) Rabbit Polyclonal Antibody

Product data:

Product Type:	Primary Antibodies
Applications:	IHC, WB
Recommended Dilution:	ELISA: 1/1000. Western Blot: 1/100-1/500. Immunohistochemistry on Paraffin Sections: 1/50-1/100.
Reactivity:	Human
Host:	Rabbit
Isotype:	Ig
Clonality:	Polyclonal
Immunogen:	KLH conjugated synthetic peptide between 416~446 amino acids from the Central region of Human INSC
Specificity:	This antibody recognizes Human INSC (Center).
Formulation:	PBS containing 0.09% (W/V) Sodium Azide as preservative State: Aff - Purified State: Liquid purified Ig fraction
Concentration:	lot specific
Purification:	Protein A column, followed by peptide affinity purification
Conjugation:	Unconjugated
Storage:	Store undiluted at 2-8°C for one month or (in aliquots) at -20°C for longer. Avoid repeated freezing and thawing.
Stability:	Shelf life: one year from despatch.
Gene Name:	inscuteable homolog (Drosophila)
Database Link:	Entrez Gene 387755 Human Q1MX18
Background:	In Drosophila, neuroblasts divide asymmetrically into another neuroblast at the apical side and a smaller ganglion mother cell on the basal side. Cell polarization is precisely regulated by 2 apically localized multiprotein signaling complexes that are tethered by Inscuteable, which regulates their apical localization (Izaki et al., 2006 [PubMed 16458856]).

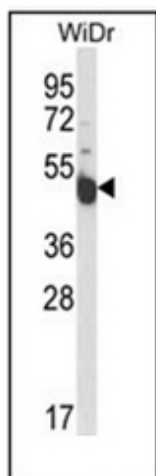


[View online »](#)

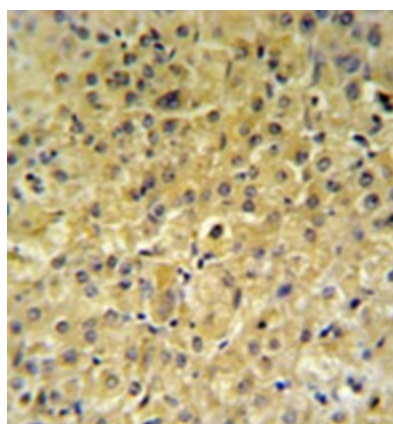
Synonyms: Protein inscuteable homolog

Note: **Molecular Weight:** 63469 Da

Product images:



Western blot analysis of INSC Antibody (Center) in WiDr cell line lysates (35ug/lane). INSC (arrow) was detected using the purified Pab.



Immunohistochemistry analysis in formalin fixed and paraffin embedded hepatocarcinoma reacted with INSC Antibody (Center) followed by peroxidase conjugation of the secondary antibody and DAB staining.