

Product datasheet for **AP52214PU-N**

INPP5B (C-term) Rabbit Polyclonal Antibody

Product data:

| | |
|-----------------------|--|
| Product Type: | Primary Antibodies |
| Applications: | FC, IHC, WB |
| Recommended Dilution: | ELISA: 1/1000. Western Blot: 1/100-1/500. Flow Cytometry: 1/10-1/50. Immunohistochemistry on Paraffin Sections: 1/50-1/100. |
| Reactivity: | Human |
| Host: | Rabbit |
| Isotype: | Ig |
| Clonality: | Polyclonal |
| Immunogen: | KLH conjugated synthetic peptide between 957-987 amino acids from the C-terminal region of Human INPP5B / 5PTase 2. |
| Specificity: | This antibody recognizes Human INPP5B / 5PTase 2 (C-term). |
| Formulation: | PBS containing 0.09% (W/V) Sodium Azide as preservative State: Aff - Purified State: Liquid purified Ig fraction |
| Concentration: | lot specific |
| Purification: | Protein A column, followed by peptide affinity purification |
| Conjugation: | Unconjugated |
| Storage: | Store undiluted at 2-8°C for one month or (in aliquots) at -20°C for longer. Avoid repeated freezing and thawing. |
| Stability: | Shelf life: one year from despatch. |
| Gene Name: | inositol polyphosphate-5-phosphatase B |
| Database Link: | Entrez Gene 3633 Human P32019 |



[View online »](#)

Background:

Cellular calcium signaling is controlled by the production of inositol phosphates (IPs) by phospholipase C in response to extracellular signals. The IP signaling molecules are inactivated by a family of inositol polyphosphate-5-phosphatases (5-phosphatases). INPP5B encodes the type II 5-phosphatase. The protein is localized to the cytosol and mitochondria, and associates with membranes through an isoprenyl modification near the C-terminus. Several alternatively spliced transcript variants of this gene have been described, but the full-length nature of some of these variants has not been determined. [provided by RefSeq].

Synonyms:

5PTase; MGC65156; MGC71303

Note:

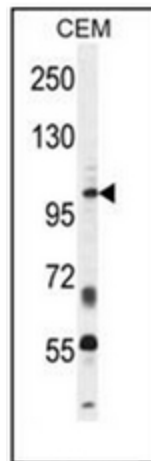
Molecular Weight: 112852 Da

Protein Families:

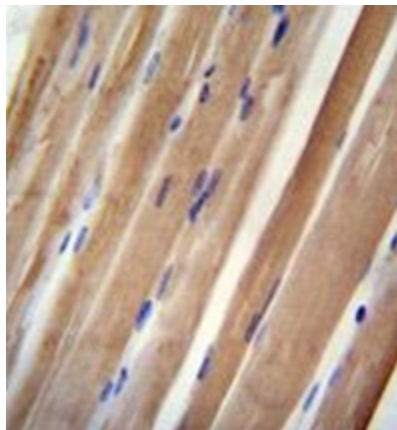
Druggable Genome

Protein Pathways:

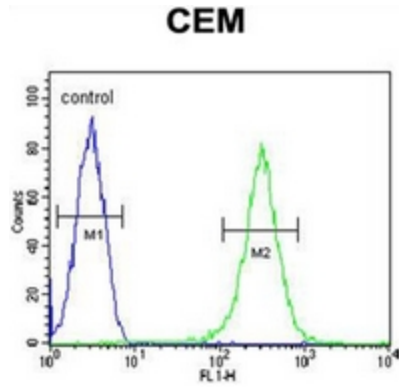
Inositol phosphate metabolism, Metabolic pathways, Phosphatidylinositol signaling system

Product images:

Western blot analysis of INPP5B / 5PTase 2 Antibody (C-term) in CEM cell line lysates (35ug/lane). This demonstrates the INPP5B antibody detected the INPP5B protein (arrow).



Immunohistochemistry analysis in formalin fixed and paraffin embedded human skeletal muscle reacted with INPP5B / 5PTase 2 Antibody (C-term) followed by peroxidase conjugation of the secondary antibody and DAB staining.



Flow cytometric analysis of CEM cells using INPP5B / 5PTase 2 Antibody (C-term) (right histogram) compared to a negative control cell (left histogram). FITC-conjugated goat-anti-rabbit secondary antibodies were used for the analysis.