

## Product datasheet for **AP52212PU-N**

### Inhibin beta B (INHBB) (C-term) Rabbit Polyclonal Antibody

#### Product data:

|                       |                                                                                                                            |
|-----------------------|----------------------------------------------------------------------------------------------------------------------------|
| Product Type:         | Primary Antibodies                                                                                                         |
| Applications:         | IHC, WB                                                                                                                    |
| Recommended Dilution: | <b>ELISA:</b> 1/1000.<br><b>Western Blot:</b> 1/100-1/500.<br><b>Immunohistochemistry on Paraffin Sections:</b> 1/10-1/50. |
| Reactivity:           | Human, Mouse                                                                                                               |
| Host:                 | Rabbit                                                                                                                     |
| Isotype:              | Ig                                                                                                                         |
| Clonality:            | Polyclonal                                                                                                                 |
| Immunogen:            | KLH conjugated synthetic peptide between 376-404 amino acids from the C-terminal region of human INHBB                     |
| Specificity:          | This antibody recognizes Human and Mouse INHBB (C-term).                                                                   |
| Formulation:          | PBS containing 0.09% (W/V) Sodium Azide as preservative<br>State: Aff - Purified<br>State: Liquid purified Ig fraction     |
| Concentration:        | lot specific                                                                                                               |
| Purification:         | Protein A column, followed by peptide affinity purification                                                                |
| Conjugation:          | Unconjugated                                                                                                               |
| Storage:              | Store undiluted at 2-8°C for one month or (in aliquots) at -20°C for longer.<br>Avoid repeated freezing and thawing.       |
| Stability:            | Shelf life: one year from despatch.                                                                                        |
| Gene Name:            | inhibin beta B subunit                                                                                                     |
| Database Link:        | <a href="#">Entrez Gene 16324 Mouse</a> <a href="#">Entrez Gene 3625 Human</a><br><a href="#">P09529</a>                   |



[View online »](#)

**Background:**

The inhibin beta B subunit joins the alpha subunit to form a pituitary FSH secretion inhibitor. Inhibin has been shown to regulate gonadal stromal cell proliferation negatively and to have tumour-suppressor activity. In addition, serum levels of inhibin have been shown to reflect the size of granulosa-cell tumors and can therefore be used as a marker for primary as well as recurrent disease. Because expression in gonadal and various extragonadal tissues may vary severalfold in a tissue-specific fashion, it is proposed that inhibin may be both a growth/differentiation factor and a hormone. Furthermore, the beta B subunit forms a homodimer, activin B, and also joins with the beta A subunit to form a heterodimer, activin AB, both of which stimulate FSH secretion.

**Synonyms:**

Activin beta-B chain, Activin B

**Note:**

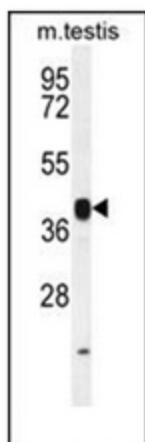
**Molecular Weight:** 45122 Da

**Protein Families:**

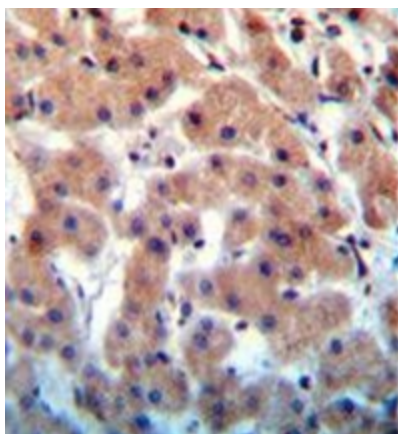
Druggable Genome, Secreted Protein

**Protein Pathways:**

Cytokine-cytokine receptor interaction, TGF-beta signaling pathway

**Product images:**

Western blot analysis of INHBB Antibody (C-term) in mouse testis tissue lysates (35ug/lane). This demonstrates the INHBB antibody detected the INHBB protein (arrow).



Immunohistochemistry analysis in formalin fixed and paraffin embedded human liver tissue reacted with INHBB Antibody (C-term) followed by peroxidase conjugation of the secondary antibody and DAB staining.