

## Product datasheet for **AP52210PU-N**

### ING5 (Center) Rabbit Polyclonal Antibody

#### Product data:

Product Type:	Primary Antibodies
Applications:	WB
Recommended Dilution:	<b>ELISA:</b> 1/1000. <b>Western Blot:</b> 1/100-1/500.
Reactivity:	Human
Host:	Rabbit
Isotype:	Ig
Clonality:	Polyclonal
Immunogen:	KLH conjugated synthetic peptide between 98~127 amino acids from the Central region of Human ING5.
Specificity:	This antibody recognizes Human ING5 (Center).
Formulation:	PBS containing 0.09% (W/V) Sodium Azide as preservative State: Aff - Purified State: Liquid purified Ig fraction
Concentration:	lot specific
Purification:	Protein A column, followed by peptide affinity purification
Conjugation:	Unconjugated
Storage:	Store undiluted at 2-8°C for one month or (in aliquots) at -20°C for longer. Avoid repeated freezing and thawing.
Stability:	Shelf life: one year from despatch.
Gene Name:	inhibitor of growth family member 5
Database Link:	<a href="#">Entrez Gene 84289 Human Q8WYH8</a>
Background:	ING5 is similar to ING1, a tumor suppressor protein that can interact with TP53, inhibit cell growth, and induce apoptosis. This protein contains a PHD-finger, which is a common motif in proteins involved in chromatin remodeling. This protein can bind TP53 and EP300/p300, a component of the histone acetyl transferase complex, suggesting its involvement in TP53-dependent regulatory pathway. [provided by RefSeq].



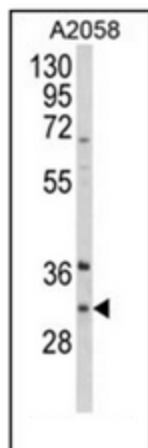
[View online »](#)

**Synonyms:** Inhibitor of growth protein 5, p28ING5

**Note:** **Molecular Weight:** 27751 Da

**Protein Families:** Druggable Genome

**Product images:**



Western blot analysis of ING5 Antibody (Center) in A2058 cell line lysates (35ug/lane). ING5 (arrow) was detected using the purified Pab.