

Product datasheet for **AP52208PU-N**

IMPDH1 (N-term) Rabbit Polyclonal Antibody

Product data:

Product Type:	Primary Antibodies
Applications:	IHC, WB
Recommended Dilution:	ELISA: 1/1000. Western Blot: 1/100-1/500. Immunohistochemistry on Paraffin Sections: 1/10-1/50.
Reactivity:	Human
Host:	Rabbit
Isotype:	Ig
Clonality:	Polyclonal
Immunogen:	KLH conjugated synthetic peptide between 83-113 amino acids from the N-terminal region of Human IMPDH1 / IMPD1
Specificity:	This antibody recognizes Human IMPDH1 / IMPD1 (N-term).
Formulation:	PBS containing 0.09% (W/V) Sodium Azide as preservative State: Aff - Purified State: Liquid purified Ig fraction
Concentration:	lot specific
Purification:	Protein A column, followed by peptide affinity purification
Conjugation:	Unconjugated
Storage:	Store undiluted at 2-8°C for one month or (in aliquots) at -20°C for longer. Avoid repeated freezing and thawing.
Stability:	Shelf life: one year from despatch.
Gene Name:	IMP (inosine 5'-monophosphate) dehydrogenase 1
Database Link:	Entrez Gene 3614 Human P20839



[View online »](#)

Background:

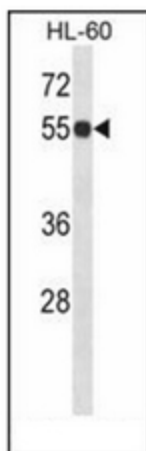
The protein encoded by this gene acts as a homotetramer to regulate cell growth. The encoded protein is an enzyme that catalyzes the synthesis of xanthine monophosphate (XMP) from inosine-5'-monophosphate (IMP). This is the rate-limiting step in the de novo synthesis of guanine nucleotides. Defects in this gene are a cause of retinitis pigmentosa type 10 (RP10). Several transcript variants encoding different isoforms have been found for this gene.

Synonyms:

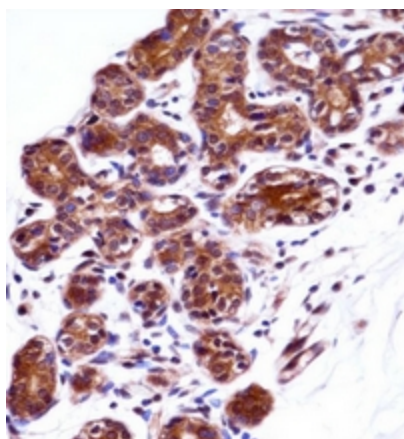
IMPDH-1, IMPDH-I, IMPDH 1, IMPD 1, IMP dehydrogenase 1

Note:

Molecular Weight: 55406 Da

Product images:

Western blot analysis of IMPDH1 / IMPD1 Antibody (N-term) in HL-60 cell line lysates (35ug/lane). This demonstrates the IMPDH1 antibody detected the IMPDH1 protein (arrow).



Immunohistochemistry analysis in formalin fixed and paraffin embedded human breast tissue reacted with IMPDH1 / IMPD1 Antibody (N-term) followed by peroxidase conjugation of the secondary antibody and DAB staining.