

Product datasheet for **AP52204PU-N**

IMMP2L (Center) Rabbit Polyclonal Antibody

Product data:

Product Type:	Primary Antibodies
Applications:	FC, IHC, WB
Recommended Dilution:	ELISA: 1/1000. Western Blot: 1/100-1/500. Flow Cytometry: 1/10-1/50. Immunohistochemistry on Paraffin Sections: 1/50-1/100.
Reactivity:	Human
Host:	Rabbit
Isotype:	Ig
Clonality:	Polyclonal
Immunogen:	KLH conjugated synthetic peptide between 88~117 amino acids from the Central region of Human IMMP2L
Specificity:	This antibody recognizes Human IMMP2L (Center).
Formulation:	PBS containing 0.09% (W/V) Sodium Azide as preservative State: Aff - Purified State: Liquid purified Ig fraction
Concentration:	lot specific
Purification:	Protein A column, followed by peptide affinity purification
Conjugation:	Unconjugated
Storage:	Store undiluted at 2-8°C for one month or (in aliquots) at -20°C for longer. Avoid repeated freezing and thawing.
Stability:	Shelf life: one year from despatch.
Gene Name:	inner mitochondrial membrane peptidase subunit 2
Database Link:	Entrez Gene 83943 Human Q96T52



[View online »](#)

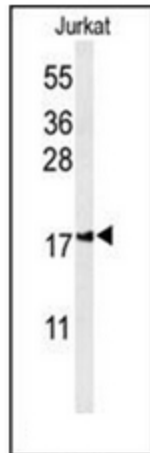
Background: IMP2L complex generates mature, active proteins in the mitochondrial intermembrane space by proteolytically removing the mitochondrial targeting presequence of nuclear-encoded proteins. IMP1 (IMMP1L; MIM 612323) and IMP2 are the catalytic subunits of the IMP complex.

Synonyms: IMP2-like protein

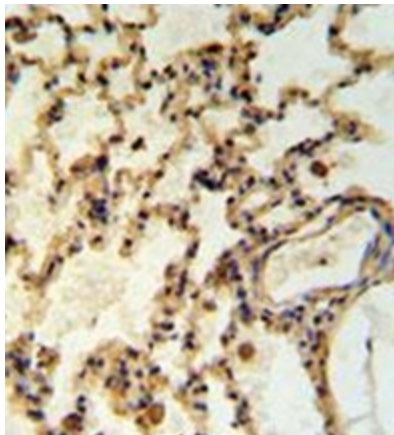
Note: **Molecular Weight:** 19718 Da

Protein Families: Druggable Genome, Protease

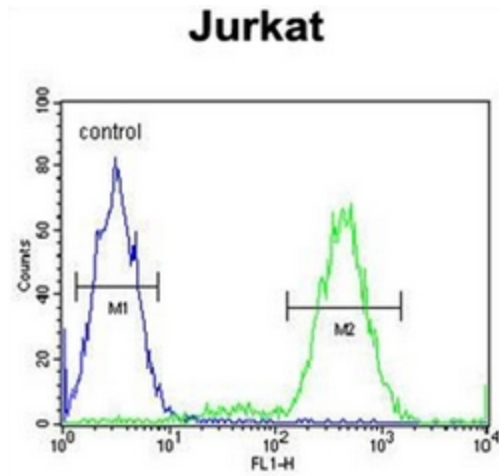
Product images:



Western blot analysis of IMMP2L Antibody (Center) in Jurkat cell line lysates (35ug/lane). IMMP2L (arrow) was detected using the purified Pab.



Immunohistochemistry analysis in formalin fixed and paraffin embedded rat lung tissue reacted with IMMP2L Antibody (Center) followed by peroxidase conjugation of the secondary antibody and DAB staining.



Flow cytometric analysis of Jurkat cells using IMMP2L Antibody (Center) (right histogram) compared to a negative control cell (left histogram). FITC-conjugated goat-anti-rabbit secondary antibodies were used for the analysis.