

Product datasheet for **AP52199PU-N**

IL6 (Center) Rabbit Polyclonal Antibody

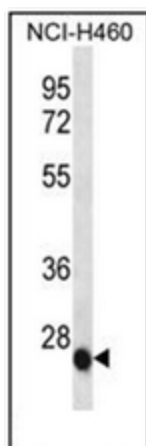
Product data:

Product Type:	Primary Antibodies
Applications:	FC, IHC, WB
Recommended Dilution:	ELISA: 1/1000. Western Blot: 1/100-1/500. Flow Cytometry: 1/10-1/50. Immunohistochemistry on Paraffin Sections: 1/10-1/50.
Reactivity:	Human
Host:	Rabbit
Isotype:	Ig
Clonality:	Polyclonal
Immunogen:	KLH conjugated synthetic peptide between 26-55 amino acids from the Central region of Human Interleukin-6
Specificity:	This antibody recognizes Human Interleukin-6 (Center).
Formulation:	PBS containing 0.09% (W/V) Sodium Azide as preservative State: Aff - Purified State: Liquid purified Ig fraction
Concentration:	lot specific
Purification:	Protein A column, followed by peptide affinity purification
Conjugation:	Unconjugated
Storage:	Store undiluted at 2-8°C for one month or (in aliquots) at -20°C for longer. Avoid repeated freezing and thawing.
Stability:	Shelf life: one year from despatch.
Gene Name:	interleukin 6
Database Link:	Entrez Gene 3569 Human P05231

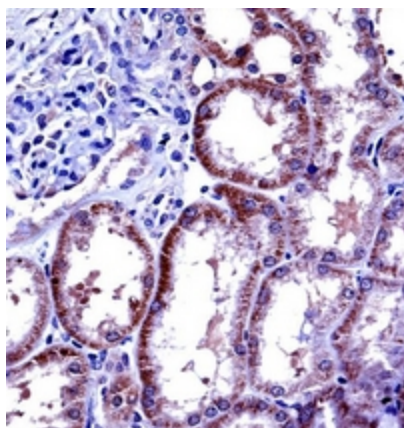


[View online »](#)

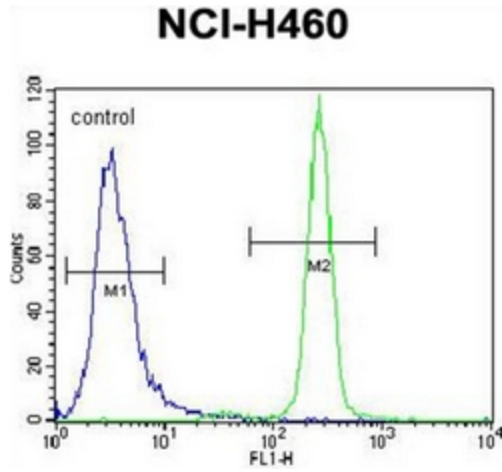
Background:	This gene encodes a cytokine that functions in inflammation and the maturation of B cells. The protein is primarily produced at sites of acute and chronic inflammation, where it is secreted into the serum and induces a transcriptional inflammatory response through interleukin 6 receptor, alpha. The functioning of this gene is implicated in a wide variety of inflammation-associated disease states, including susceptibility to diabetes mellitus and systemic juvenile rheumatoid arthritis.
Synonyms:	IL-6, Interferon beta-2, IFNB2, B-cell stimulatory factor 2, BSF-2, CDF
Note:	Molecular Weight: 23718 Da
Protein Families:	Druggable Genome, Secreted Protein
Protein Pathways:	Cytokine-cytokine receptor interaction, Cytosolic DNA-sensing pathway, Graft-versus-host disease, Hematopoietic cell lineage, Hypertrophic cardiomyopathy (HCM), Jak-STAT signaling pathway, NOD-like receptor signaling pathway, Pathways in cancer, Prion diseases, Toll-like receptor signaling pathway

Product images:

Western blot analysis of Interleukin-6 (IL6) Antibody (Center) in NCI-H460 cell line lysates (35ug/lane). This demonstrates the IL6 antibody detected the IL6 protein (arrow).



Immunohistochemistry analysis in formalin fixed and paraffin embedded human kidney tissue reacted with Interleukin-6 (IL6) Antibody (Center) followed by peroxidase conjugation of the secondary antibody and DAB staining.



Flow cytometric analysis of NCI-H460 cells using Interleukin-6 (IL6) Antibody (Center) (right histogram) compared to a negative control cell (left histogram). FITC-conjugated goat-anti-rabbit secondary antibodies were used for the analysis.