

## Product datasheet for **AP52197PU-N**

### IL2 Receptor gamma (IL2RG) (N-term) Rabbit Polyclonal Antibody

#### Product data:

Product Type:	Primary Antibodies
Applications:	FC, WB
Recommended Dilution:	<b>Western Blot:</b> 1/1000. <b>Flow Cytometry:</b> 1/10-1/50.
Reactivity:	Human
Host:	Rabbit
Isotype:	Ig
Clonality:	Polyclonal
Immunogen:	KLH conjugated synthetic peptide between 76 - 101 amino acids from the N-terminal region of Human CD132 / IL2RG
Specificity:	This antibody recognizes Human CD132 / IL2RG (N-term).
Formulation:	PBS containing 0.09% (W/V) Sodium Azide as preservative State: Aff - Purified State: Liquid purified Ig fraction
Concentration:	lot specific
Purification:	Protein A column, followed by peptide affinity purification
Conjugation:	Unconjugated
Storage:	Store undiluted at 2-8°C for one month or (in aliquots) at -20°C for longer. Avoid repeated freezing and thawing.
Stability:	Shelf life: one year from despatch.
Gene Name:	Homo sapiens interleukin 2 receptor subunit gamma (IL2RG)
Database Link:	<a href="#">Entrez Gene 3561 Human P31785</a>
Background:	IL2RG is an important signaling component of many interleukin receptors, including those of interleukin -2, -4, -7 and -21, and is thus referred to as the common gamma chain. Mutations in this gene cause X-linked severe combined immunodeficiency (XSCID), as well as X-linked combined immunodeficiency (XCID), a less severe immunodeficiency disorder.
Synonyms:	Gamma-C, p64, Interleukin-2 receptor gamma chain



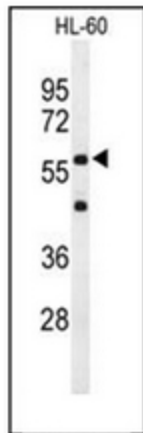
[View online »](#)

**Note:** **Molecular Weight:** 42287 Da

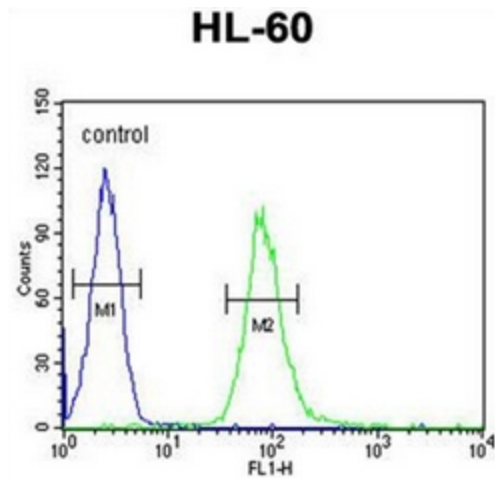
**Protein Families:** Druggable Genome, Transmembrane

**Protein Pathways:** Cytokine-cytokine receptor interaction, Endocytosis, Jak-STAT signaling pathway, Primary immunodeficiency

**Product images:**



Western blot analysis of CD132 / IL2RG Antibody (N-term) in HL-60 cell line lysates (35ug/lane). IL2RG (arrow) was detected using the purified Pab.



Flow cytometric analysis of HL-60 cells using CD132 / IL2RG Antibody (N-term) (right histogram) compared to a negative control cell (left histogram). FITC-conjugated goat-anti-rabbit secondary antibodies were used for the analysis.