

## Product datasheet for **AP52196PU-N**

### IL2 Receptor gamma (IL2RG) (Center) Rabbit Polyclonal Antibody

#### Product data:

Product Type:	Primary Antibodies
Applications:	WB
Recommended Dilution:	<b>ELISA:</b> 1/1000. <b>Western Blot:</b> 1/100-1/500.
Reactivity:	Human, Mouse
Host:	Rabbit
Isotype:	Ig
Clonality:	Polyclonal
Immunogen:	KLH conjugated synthetic peptide between 207~237 amino acids from the Central region of Human CD132 / IL2RG
Specificity:	This antibody recognizes Human and Mouse CD132 / IL2RG (Center).
Formulation:	PBS containing 0.09% (W/V) Sodium Azide as preservative State: Purified State: Liquid purified Ig fraction
Concentration:	lot specific
Purification:	Protein A column, followed by peptide affinity purification
Conjugation:	Unconjugated
Storage:	Store undiluted at 2-8°C for one month or (in aliquots) at -20°C for longer. Avoid repeated freezing and thawing.
Stability:	Shelf life: one year from despatch.
Gene Name:	interleukin 2 receptor subunit gamma
Database Link:	<a href="#">Entrez Gene 16186 Mouse</a> <a href="#">Entrez Gene 3561 Human</a> <a href="#">P31785</a>
Background:	IL2RG is an important signaling component of many interleukin receptors, including those of interleukin -2, -4, -7 and -21, and is thus referred to as the common gamma chain.
Synonyms:	Gamma-C, p64, Interleukin-2 receptor gamma chain
Note:	<b>Molecular Weight:</b> 42287 Da

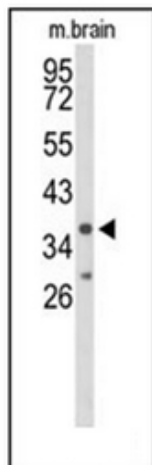


[View online »](#)

**Protein Families:** Druggable Genome, Transmembrane

**Protein Pathways:** Cytokine-cytokine receptor interaction, Endocytosis, Jak-STAT signaling pathway, Primary immunodeficiency

**Product images:**



Western blot analysis of CD132 / IL2RG Antibody (Center) in mouse brain tissue lysates (35ug/lane). IL2RG (arrow) was detected using the purified Pab.