

Product datasheet for **AP52195PU-N**

IL28B (IFNL3) (N-term) Rabbit Polyclonal Antibody

Product data:

Product Type:	Primary Antibodies
Applications:	WB
Recommended Dilution:	Western blot: 1/100-1/500. Enzyme immunoassay: 1/1000.
Reactivity:	Human
Host:	Rabbit
Isotype:	Ig
Clonality:	Polyclonal
Immunogen:	Synthetic peptide - KLH conjugated - corresponding to the N-terminal region (between 33-63aa) of human Interleukin-28B
Specificity:	This antibody recognizes Interleukin-28B at N-term.
Formulation:	PBS with 0.09% (W/V) Sodium azide State: Aff - Purified State: Liquid purified Ig fraction
Concentration:	lot specific
Purification:	Purified through a Protein A column followed by peptide affinity purification
Conjugation:	Unconjugated
Storage:	Store undiluted at 2-8°C for one month or (in aliquots) at -20°C for longer. Avoid repeated freezing and thawing.
Stability:	Shelf life: one year from despatch.
Gene Name:	interferon, lambda 3
Database Link:	Entrez Gene 282617 Human Q8IZ19



[View online »](#)

Background: The IL28B gene encodes a cytokine distantly related to type I interferons and the IL-10 family. IL28B, IL28A, and IL29 are three closely related cytokine genes that form a cytokine gene cluster on a chromosomal region mapped to 19q13. Expression of the cytokines encoded by the three genes can be induced by viral infection. All three cytokines have been shown to interact with a heterodimeric class II cytokine receptor that consists of interleukin 10 receptor, beta (IL10RB) and interleukin 28 receptor, alpha (IL28RA).

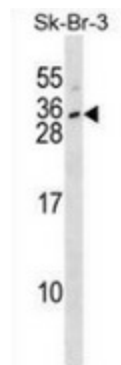
Synonyms: Il28b, Ifnl3, Il28, Interferon lambda-3, IFN-lambda-3

Note: **Molecular Weight:** 21706 Da

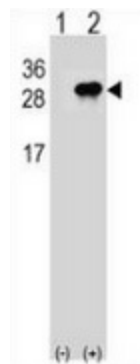
Protein Families: Druggable Genome, Secreted Protein, Transmembrane

Protein Pathways: Cytokine-cytokine receptor interaction, Jak-STAT signaling pathway

Product images:



Western blot analysis in SK-BR-3 cell line lysates (35ug/lane) using Interleukin-28B antibody. (N-term). This demonstrates the Interleukin-28B antibody detected the Interleukin-28B protein (arrow).



Western blot analysis of Interleukin-28B (arrow) using rabbit polyclonal Interleukin-28B antibody (N-term): 293 cell lysates (2ug/lane) either nontransfected (Lane 1) or transiently transfected (Lane 2) with the IL28B gene.