

## Product datasheet for **AP52194PU-N**

### IL26 (Center) Rabbit Polyclonal Antibody

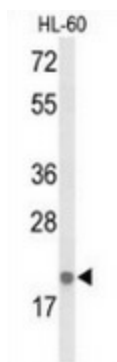
#### Product data:

Product Type:	Primary Antibodies
Applications:	WB
Recommended Dilution:	<b>Western blot:</b> 1/100-1/500. Enzyme immunoassay: 1/1000.
Reactivity:	Human
Host:	Rabbit
Isotype:	Ig
Clonality:	Polyclonal
Immunogen:	Synthetic peptide - KLH conjugated - corresponding to the central region (between 94-124aa) of human Interleukin-6 / IL26
Specificity:	This antibody recognizes Interleukin-26 / IL26.
Formulation:	PBS with 0.09% (W/V) Sodium azide State: Aff - Purified State: Liquid purified Ig fraction
Concentration:	lot specific
Purification:	Purified through a Protein A column followed by peptide affinity purification
Conjugation:	Unconjugated
Gene Name:	interleukin 26
Database Link:	<a href="#">Entrez Gene 55801 Human Q9NPH9</a>
Background:	IL26 is a member of the IL10 family of cytokines. It is a secreted protein and may function as a homodimer. This protein is thought to contribute to the transformed phenotype of T cells after infection by herpesvirus samimiri.
Synonyms:	IL-26, AK155
Note:	<b>Molecular Weight:</b> 19843 Da
Protein Families:	Druggable Genome, Secreted Protein
Protein Pathways:	Cytokine-cytokine receptor interaction, Jak-STAT signaling pathway



[View online »](#)

## Product images:



Western blot analysis of IL26 (arrow) in HL-60 cell line lysates (35ug/lane) using Interleukin-26 / IL26 antibody.