

Product datasheet for **AP52193PU-N**

IL17E (IL25) (Center) Rabbit Polyclonal Antibody

Product data:

Product Type:	Primary Antibodies
Applications:	IHC, WB
Recommended Dilution:	ELISA: 1/1000. Western Blot: 1/100-1/500. Immunohistochemistry on Paraffin Sections: 1/10-1/50.
Reactivity:	Human
Host:	Rabbit
Isotype:	Ig
Clonality:	Polyclonal
Immunogen:	KLH conjugated synthetic peptide between 75-104 amino acids from the Central region of Human Interleukin-25 / IL25
Specificity:	This antibody recognizes Human Interleukin-25 / IL25 (Center).
Formulation:	PBS containing 0.09% (W/V) Sodium Azide as preservative State: Aff - Purified State: Liquid purified Ig fraction
Concentration:	lot specific
Purification:	Protein A column, followed by peptide affinity purification
Conjugation:	Unconjugated
Storage:	Store undiluted at 2-8°C for one month or (in aliquots) at -20°C for longer. Avoid repeated freezing and thawing.
Stability:	Shelf life: one year from despatch.
Gene Name:	interleukin 25
Database Link:	Entrez Gene 64806 Human Q9H293



[View online »](#)

Background:

The protein encoded by this gene is a cytokine that shares sequence similarity with interleukin 17. This cytokine can induce NF-kappaB activation, and stimulate the production of interleukin 8. Both this cytokine and interleukin 17B are ligands for the cytokine receptor IL17BR. Studies of a similar gene in mice suggest that this cytokine may be a pro-inflammatory cytokine favoring the Th2-type immune response. Alternative splicing results in multiple transcript variants.

Synonyms:

IL-25, IL17E, IL-17E, Interleukin-17E

Note:

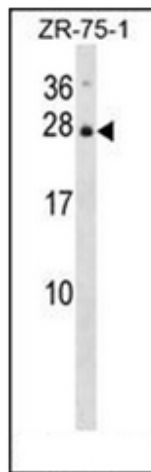
Molecular Weight: 20330 Da

Protein Families:

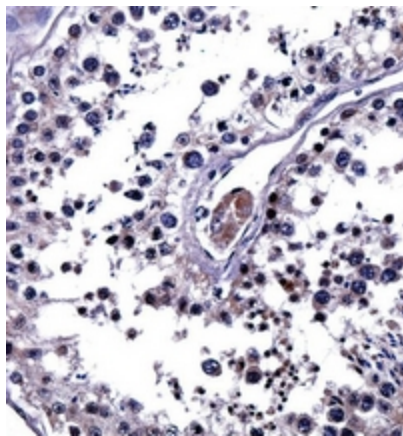
Druggable Genome, Secreted Protein, Transmembrane

Protein Pathways:

Cytokine-cytokine receptor interaction

Product images:

Western blot analysis of Interleukin-25 / IL25 Antibody (Center) in ZR-75-1 cell line lysates (35ug/lane). This demonstrates the IL25 antibody detected the IL25 protein (arrow).



Immunohistochemistry analysis in formalin fixed and paraffin embedded human testis tissue reacted with Interleukin-25 / IL25 Antibody (Center) followed by peroxidase conjugation of the secondary antibody and DAB staining.