

## Product datasheet for **AP52192PU-N**

### IL1 Receptor II (IL1R2) (Center) Rabbit Polyclonal Antibody

#### Product data:

Product Type:	Primary Antibodies
Applications:	WB
Recommended Dilution:	<b>Western blot:</b> 1/100-1/500. Enzyme immunoassay: 1/1000.
Reactivity:	Human
Host:	Rabbit
Isotype:	Ig
Clonality:	Polyclonal
Immunogen:	Synthetic peptide - KLH conjugated - corresponding to the central region (between 273-300aa) of human CD121b / IL1R2.
Specificity:	This antibody recognizes CD121b / IL1R2.
Formulation:	PBS with 0.09% (W/V) Sodium azide State: Aff - Purified State: Liquid purified Ig fraction
Concentration:	lot specific
Purification:	Purified through a Protein A column followed by peptide affinity purification
Conjugation:	Unconjugated
Storage:	Store undiluted at 2-8°C for one month or (in aliquots) at -20°C for longer. Avoid repeated freezing and thawing.
Stability:	Shelf life: one year from despatch.
Gene Name:	interleukin 1 receptor type 2
Database Link:	<a href="#">Entrez Gene 7850 Human P27930</a>



[View online »](#)

**Background:** The protein encoded by the IL1R2 gene is a cytokine receptor that belongs to the interleukin 1 receptor family. This protein binds interleukin alpha (IL1A), interleukin beta (IL1B), and interleukin 1 receptor, type I (IL1R1/IL1RA), and acts as a decoy receptor that inhibits the activity of its ligands. Interleukin 4 (IL4) is reported to antagonize the activity of interleukin 1 by inducing the expression and release of this cytokine. This gene and three other genes form a cytokine receptor gene cluster on chromosome 2q12. Two alternatively spliced transcript variants encoding the same protein have been reported.

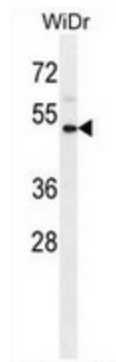
**Synonyms:** Interleukin-1 receptor type II, IL-1R-2, IL-1R-beta, CDw121b, IL1RB

**Note:** **Molecular Weight:** 45421 Da

**Protein Families:** Druggable Genome, Transmembrane

**Protein Pathways:** Cytokine-cytokine receptor interaction, Hematopoietic cell lineage, MAPK signaling pathway

### Product images:



Western blot analysis in WiDr cell line lysates (35ug/lane) using CD121b / IL1R2 antibody. This demonstrates the IL1R2 antibody detected the IL1R2 protein (arrow).