

Product datasheet for **AP52189PU-N**

IL17RD (N-term) Rabbit Polyclonal Antibody

Product data:

Product Type:	Primary Antibodies
Applications:	WB
Recommended Dilution:	ELISA: 1/1000. Western Blot: 1/100-1/500.
Reactivity:	Human
Host:	Rabbit
Isotype:	Ig
Clonality:	Polyclonal
Immunogen:	KLH conjugated synthetic peptide between 224-253 amino acids from the N-terminal region of human IL17RD
Specificity:	This antibody recognizes Human IL17RD (N-term).
Formulation:	PBS containing 0.09% (W/V) Sodium Azide as preservative State: Aff - Purified State: Liquid purified Ig fraction
Concentration:	lot specific
Purification:	Protein A column, followed by peptide affinity purification
Conjugation:	Unconjugated
Storage:	Store undiluted at 2-8°C for one month or (in aliquots) at -20°C for longer. Avoid repeated freezing and thawing.
Stability:	Shelf life: one year from despatch.
Gene Name:	interleukin 17 receptor D
Database Link:	Entrez Gene 54756 Human Q8NFM7
Background:	Fibroblast growth factors (FGFs; see MIM 603726) are secreted proteins involved in cellular proliferation, migration, differentiation, and survival. FGF activity is negatively regulated by members of the 'sprouty' family (e.g., SPRY1, MIM 602465). The SEF protein is a modulator of FGF signaling.
Synonyms:	Interleukin-17 receptor D, IL-17 receptor D, IL-17RD, IL17Rhom, Sef homolog, IL17RLM, SEF

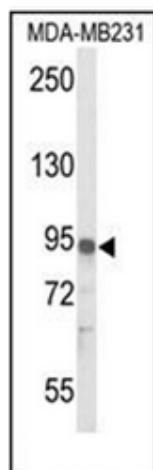


[View online »](#)

Note: **Molecular Weight:** 82411 Da

Protein Families: Druggable Genome

Product images:



Western blot analysis of IL17RD Antibody (N-term) in MDA-MB231 cell line lysates (35ug/lane). IL17RD (arrow) was detected using the purified Pab.