

Product datasheet for **AP52188PU-N**

IL17F (N-term) Rabbit Polyclonal Antibody

Product data:

Product Type:	Primary Antibodies
Applications:	FC, WB
Recommended Dilution:	ELISA: 1/1000. Western Blot: 1/100-1/500. Flow Cytometry: 1/10-1/50.
Reactivity:	Human
Host:	Rabbit
Isotype:	Ig
Clonality:	Polyclonal
Immunogen:	KLH conjugated synthetic peptide between 16-46 amino acids from the N-terminal region of human IL17F.
Specificity:	This antibody recognizes Human Interleukin-17F / IL17F (N-term).
Formulation:	PBS containing 0.09% (W/V) Sodium Azide as preservative State: Aff - Purified State: Liquid purified Ig fraction
Concentration:	lot specific
Purification:	Protein A column, followed by peptide affinity purification
Conjugation:	Unconjugated
Storage:	Store undiluted at 2-8°C for one month or (in aliquots) at -20°C for longer. Avoid repeated freezing and thawing.
Stability:	Shelf life: one year from despatch.
Gene Name:	interleukin 17F
Database Link:	Entrez Gene 112744 Human Q96PD4



[View online »](#)

Background:

The protein encoded by this gene is a cytokine that shares sequence similarity with IL17. This cytokine is expressed by activated T cells, and has been shown to stimulate the production of several other cytokines, including IL6, IL8, and CSF2/GM-CSF. This cytokine is also found to inhibit the angiogenesis of endothelial cells and induce endothelial cells to produce IL2, TGFB1/TGFB, and monocyte chemoattractant protein-1. [provided by RefSeq].

Synonyms:

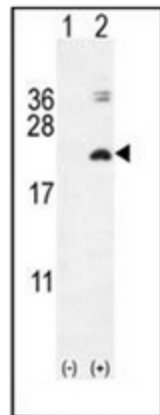
IL24, Cytokine ML-1, Interleukin-24, IL-24

Note:

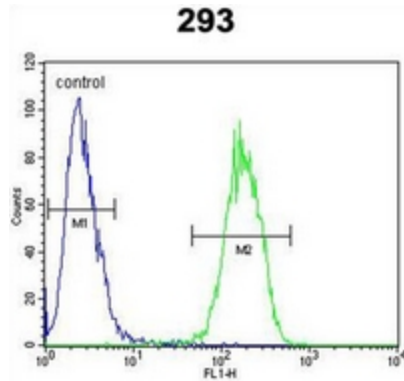
Molecular Weight: 18045 Da

Protein Families:

Druggable Genome, Secreted Protein

Product images:


Western blot analysis of IL17F (arrow) using Interleukin-17F / IL17F Antibody (N-term). 293 cell lysates (2 ug/lane) either nontransfected (Lane 1) or transiently transfected with the IL17F gene (Lane 2).



Flow cytometric analysis of 293 cells using Interleukin-17F / IL17F Antibody (N-term) (right histogram) compared to a negative control cell (left histogram). FITC-conjugated goat-anti-rabbit secondary antibodies were used for the analysis