

## Product datasheet for **AP52187PU-N**

### IL17D (C-term) Rabbit Polyclonal Antibody

#### Product data:

Product Type:	Primary Antibodies
Applications:	WB
Recommended Dilution:	<b>ELISA:</b> 1/1000. <b>Western Blot:</b> 1/100-1/500.
Reactivity:	Human
Host:	Rabbit
Isotype:	Ig
Clonality:	Polyclonal
Immunogen:	KLH conjugated synthetic peptide between 154-183 amino acids from the C-terminal region of Human IL17D
Specificity:	This antibody recognizes Human Interleukin-17D / IL17D (C-term).
Formulation:	PBS containing 0.09% (W/V) Sodium Azide as preservative State: Aff - Purified State: Liquid purified Ig fraction
Concentration:	lot specific
Purification:	Protein A column, followed by peptide affinity purification
Conjugation:	Unconjugated
Storage:	Store undiluted at 2-8°C for one month or (in aliquots) at -20°C for longer. Avoid repeated freezing and thawing.
Stability:	Shelf life: one year from despatch.
Gene Name:	interleukin 17D
Database Link:	<a href="#">Entrez Gene 53342 Human Q8TAD2</a>
Background:	The protein encoded by this gene is a cytokine that shares the sequence similarity with IL17. The treatment of endothelial cells with this cytokine has been shown to stimulate the production of other cytokines including IL6, IL8 and CSF2/ GM-CSF. The increased expression of IL8 induced by this cytokine was found to be NF-kappa B-dependent.
Synonyms:	IL-17D, IL27, Interleukin-27

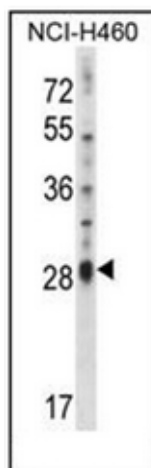


[View online »](#)

Note: **Molecular Weight:** 21893 Da

Protein Families: Druggable Genome, Secreted Protein

**Product images:**



Western blot analysis of Interleukin-17D / IL17D Antibody (C-term) in NCI-H460 cell line lysates (35ug/lane). This demonstrates the IL17D antibody detected the IL17D protein (arrow).