

Product datasheet for **AP52184PU-N**

IL12RB2 (C-term) Rabbit Polyclonal Antibody

Product data:

Product Type:	Primary Antibodies
Applications:	FC, IHC, WB
Recommended Dilution:	This antibody is suitable for flow cytometry, immunohistochemistry on paraffin sections and Western blotting. The suggested dilution is: Flow cytometry: 1/10-1/50. Immunohistochemistry on paraffin sections 1/50-1/100. Western blotting: 1/100-1/500.
Reactivity:	Human
Host:	Rabbit
Isotype:	Ig
Clonality:	Polyclonal
Immunogen:	Synthetic peptide - KLH conjugated - corresponding to the C-terminal region (between 759-788aa) of human IL12RB2.
Specificity:	This antibody detects human IL12RB2 at C-term.
Formulation:	PBS with 0.09% (W/V) Sodium Azide. State: Aff - Purified State: Liquid purified Ig fraction
Concentration:	lot specific
Purification:	Purified through a protein A column; followed by peptide affinity purification.
Conjugation:	Unconjugated
Storage:	Store the antibody undiluted at 2-8°C for one month or (in aliquots) at -20°C for longer. Avoid repeated freezing and thawing.
Stability:	Shelf life: one year from despatch.
Gene Name:	interleukin 12 receptor subunit beta 2
Database Link:	Entrez Gene 3595 Human Q99665



[View online »](#)

Background: The protein encoded by the IL12RB2 gene is a type I transmembrane protein identified as a subunit of the interleukin 12 receptor complex. The coexpression of this and IL12RB1 proteins was shown to lead to the formation of high-affinity IL12 binding sites and reconstitution of IL12 dependent signaling. The expression of this gene is up-regulated by interferon gamma in Th1 cells, and plays a role in Th1 cell differentiation. The up-regulation of this gene is found to be associated with a number of infectious diseases, such as Crohn's disease and leprosy, which is thought to contribute to the inflammatory response and host defense.

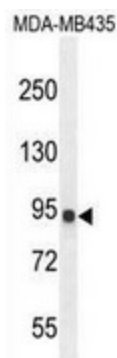
Synonyms: IL-12 receptor beta-2, IL-12R-beta-2

Note: **Molecular Weight:** 97135 Da

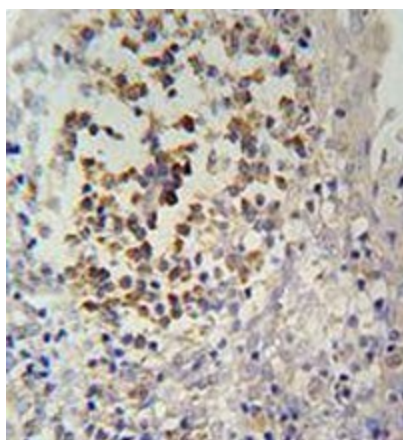
Protein Families: Druggable Genome, Transmembrane

Protein Pathways: Cytokine-cytokine receptor interaction, Jak-STAT signaling pathway

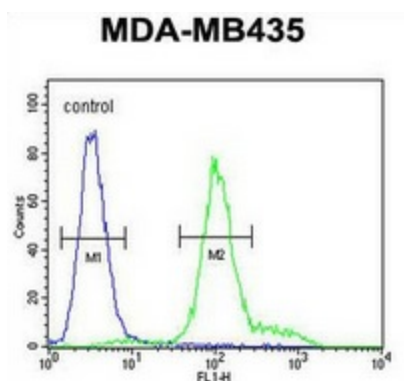
Product images:



Western blot analysis in MDA-MB435 cell line lysates (35ug/lane) using IL12RB2 antibody. This demonstrates the IL12RB2 antibody detected the IL12RB2 protein (arrow).



Immunohistochemistry analysis in human tonsils tissue (formalin-fixed, paraffin-embedded) using IL12RB2 antibody. (C-term), followed by peroxidase conjugation of the secondary antibody and DAB staining. This data demonstrates the use of the IL12RB2 antibody for IHC. Clinical relevance has not been evaluated.



Flow cytometric analysis of MDA-MB435 cells (right histogram) compared to a negative control cell (left histogram) using IL12RB2 antibody. (C-term), followed by FITC-conjugated goat-anti-rabbit secondary antibodies.