

Product datasheet for **AP52183PU-N**

IL12B (C-term) Rabbit Polyclonal Antibody

Product data:

Product Type:	Primary Antibodies
Applications:	FC, IHC, WB
Recommended Dilution:	This antibody is suitable for flow cytometry, immunohistochemistry on paraffin sections and Western blotting. The suggested dilution is: Flow cytometry: 1/10-1/50. Immunohistochemistry on paraffin sections 1/50-1/100. Western blotting: 1/100-1/500.
Reactivity:	Human
Host:	Rabbit
Isotype:	Ig
Clonality:	Polyclonal
Immunogen:	Synthetic peptide - KLH conjugated - corresponding to the C-terminal region (between 271-298aa) of human Interleukin-12 beta/IL12B.
Specificity:	This antibody detects human Interleukin-12 beta/IL12Bat C-term.
Formulation:	PBS with 0.09% (W/V) Sodium Azide. State: Aff - Purified State: Liquid purified Ig fraction
Concentration:	lot specific
Purification:	Purified through a protein A column; followed by peptide affinity purification.
Conjugation:	Unconjugated
Storage:	Store the antibody undiluted at 2-8°C for one month or (in aliquots) at -20°C for longer. Avoid repeated freezing and thawing.
Stability:	Shelf life: one year from despatch.
Gene Name:	interleukin 12B
Database Link:	Entrez Gene 3593 Human P29460



[View online »](#)

Background:

IL12B is a subunit of interleukin 12, a cytokine that acts on T and natural killer cells, and has a broad array of biological activities. Interleukin 12 is a disulfide-linked heterodimer composed of the 40 kD cytokine receptor like subunit encoded by this gene, and a 35 kD subunit encoded by IL12A. This cytokine is expressed by activated macrophages that serve as an essential inducer of Th1 cells development. This cytokine has been found to be important for sustaining a sufficient number of memory/effector Th1 cells to mediate long-term protection to an intracellular pathogen. Overexpression of this gene was observed in the central nervous system of patients with multiple sclerosis (MS), suggesting a role of this cytokine in the pathogenesis of the disease. The promoter polymorphism of this gene has been reported to be associated with the severity of atopic and non-atopic asthma in children.

Synonyms:

Interleukin-12B, IL-12B, IL-12 subunit p40, CLMF p40, NKSF2

Note:

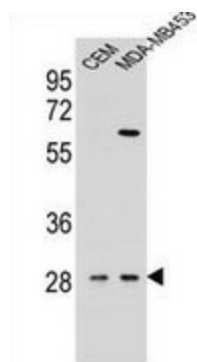
Molecular Weight: 37169 Da

Protein Families:

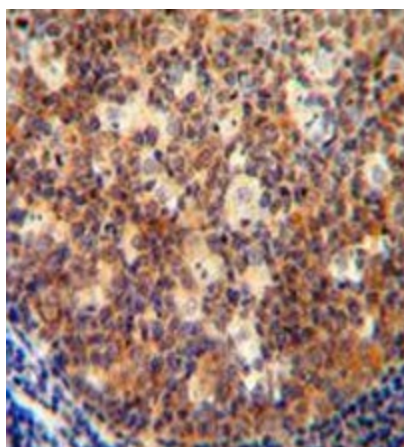
Druggable Genome, Secreted Protein, Transmembrane

Protein Pathways:

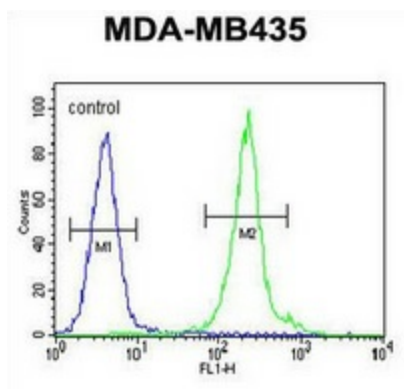
Allograft rejection, Cytokine-cytokine receptor interaction, Jak-STAT signaling pathway, RIG-I-like receptor signaling pathway, Toll-like receptor signaling pathway, Type I diabetes mellitus

Product images:


Western blot analysis in CEM, MDA-MB453 cell line lysates (35ug/lane) using Interleukin-12 beta/IL12B antibody. (C-term). This demonstrates the IL12B antibody detected the IL12B protein (arrow).



Immunohistochemistry analysis in human tonsil tissue (formalin-fixed, paraffin-embedded) using Interleukin-12 beta/IL12B antibody. (C-term), followed by peroxidase conjugation of the secondary antibody and DAB staining. This data demonstrates the use of the IL12B antibody (C-term) for IHC. Clinical relevance has not been evaluated.



Flow cytometric analysis of MDA-MB435 cells (right histogram) compared to a negative control cell (left histogram) using Interleukin-12 beta/IL12B antibody. (C-term), followed by FITC-conjugated goat-anti-rabbit secondary antibodies.