

## Product datasheet for **AP52181PU-N**

### IL10 (Center) Rabbit Polyclonal Antibody

#### Product data:

Product Type:	Primary Antibodies
Applications:	FC, IHC, WB
Recommended Dilution:	<b>Flow Cytometry:</b> 1/10-1/50. <b>Immunohistochemistry on Paraffin Sections:</b> 1/10-1/50. <b>Western blotting:</b> 1/1000.
Reactivity:	Human
Host:	Rabbit
Isotype:	Ig
Clonality:	Polyclonal
Immunogen:	Synthetic peptide - KLH conjugated corresponding to the center region (between aa 27-53) of Human IL10.
Specificity:	This antibody detects Human IL10. Other species not tested.
Formulation:	PBS with 0.09% (W/V) Sodium Azide. State: Aff - Purified State: Liquid purified Ig fraction
Concentration:	lot specific
Purification:	Purified through a protein A column; followed by peptide affinity purification.
Conjugation:	Unconjugated
Storage:	Store undiluted at 2-8°C for one month or (in aliquots) at -20°C for longer. Avoid repeated freezing and thawing.
Stability:	Shelf life: one year from despatch.
Gene Name:	Homo sapiens interleukin 10 (IL10)
Database Link:	<a href="#">Entrez Gene 3586 Human P22301</a>



[View online »](#)

**Background:**

Interleukin-10 is a cytokine produced primarily by monocytes and to a lesser extent by lymphocytes. This cytokine has pleiotropic effects in immunoregulation and inflammation. It down-regulates the expression of Th1 cytokines, MHC class II Ags, and costimulatory molecules on macrophages. It also enhances B cell survival, proliferation, and antibody production. This cytokine can block NF-kappa B activity, and is involved in the regulation of the JAK-STAT signaling pathway. Knockout studies in mice suggested the function of this cytokine as an essential immunoregulator in the intestinal tract.

**Synonyms:**

IL-10, CSIF, TGIF

**Note:**

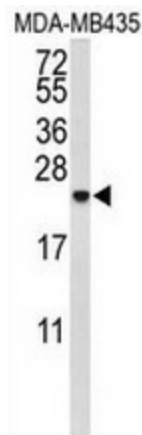
**Molecular Weight:** 20517 Da

**Protein Families:**

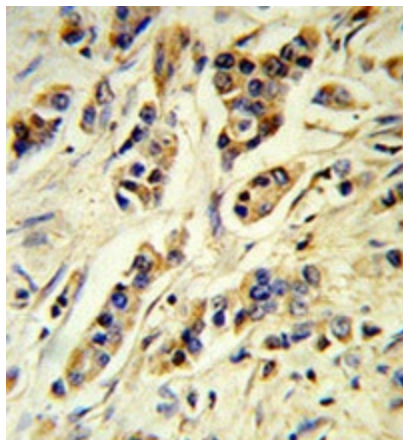
Druggable Genome, ES Cell Differentiation/IPS, Secreted Protein

**Protein Pathways:**

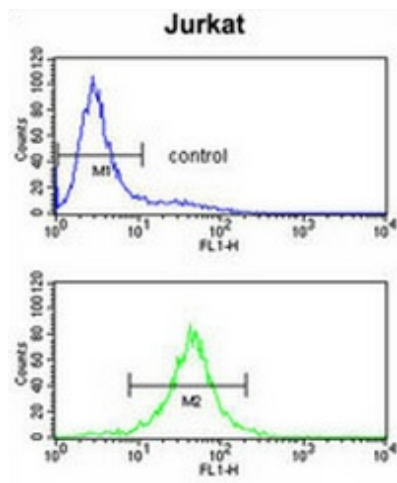
Allograft rejection, Asthma, Autoimmune thyroid disease, Cytokine-cytokine receptor interaction, Jak-STAT signaling pathway, Systemic lupus erythematosus, T cell receptor signaling pathway

**Product images:**


Western blot analysis of IL10 (arrow) in MDA-MB435 cell line lysates (35ug/lane) using Interleukin-10 / IL10 antibody.



Human breast carcinoma (formalin-fixed, paraffin-embedded) reacted with IL10 antibody, which was peroxidase-conjugated to the secondary antibody, followed by DAB staining. This data demonstrates the use of this antibody for IHC; clinical relevance has not been evaluated.



Flow cytometry analysis of Jurkat cells (bottom histogram) compared to a negative control cell (top histogram) using Interleukin-10/IL10 antibody. FITC-conjugated goat-anti-rabbit secondary antibodies were used for the analysis.