

Product datasheet for **AP52178PU-N**

IHH (N-term) Rabbit Polyclonal Antibody

Product data:

Product Type:	Primary Antibodies
Applications:	WB
Recommended Dilution:	Tis antibody is suitable for Western blotting . The suggested dilution is: 1/100-1/500.
Reactivity:	Human
Host:	Rabbit
Isotype:	Ig
Clonality:	Polyclonal
Immunogen:	Synthetic peptide - KLH conjugated - corresponding to the N-terminal region (between 50-80aa) of human Indian hedgehog protein / IHH.
Specificity:	This antibody detects Indian hedgehog protein / IHH.
Formulation:	PBS with 0.09% (W/V) Sodium Azide. State: Aff - Purified State: Liquid purified Ig fraction
Concentration:	lot specific
Purification:	Purified through a protein A column, followed by peptide affinity purification.
Conjugation:	Unconjugated
Storage:	Store the antibody undiluted at 2-8°C for one month or (in aliquots) at -20°C for longer. Avoid repeated freezing and thawing.
Stability:	Shelf life: one year from despatch.
Gene Name:	indian hedgehog
Database Link:	Entrez Gene 3549 Human Q14623



[View online »](#)

Background: The IHH gene encodes a member of the hedgehog family of secreted signaling molecules. Hedgehog proteins are essential regulators of a variety of developmental processes including growth, patterning and morphogenesis. The encoded protein specifically plays a role in bone growth and differentiation. Mutations in this gene are the cause of brachydactyly type A1 which is characterized by shortening or malformation of the phalanges. Mutations in this gene are also the cause of acrocapitofemoral dysplasia.

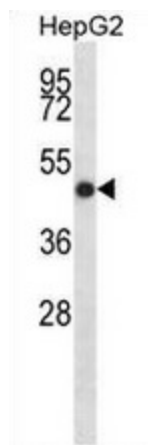
Synonyms: HHG-2, HHG2

Note: **Molecular Weight:** 45251 Da

Protein Families: Druggable Genome, ES Cell Differentiation/IPS, Protease, Transmembrane

Protein Pathways: Hedgehog signaling pathway

Product images:



Western blot analysis in HepG2 cell line lysates (35ug/lane) using Indian hedgehog protein / IHH antibody. (N-term). This demonstrates the IHH antibody detected the IHH protein (arrow).