

Product datasheet for **AP52177PU-N**

IGSF8 (Center) Rabbit Polyclonal Antibody

Product data:

Product Type:	Primary Antibodies
Applications:	IHC, WB
Recommended Dilution:	Immunohistochemistry (Paraffin sections): 1/10-1/50 Western blotting: 1/100-1/500 ELISA: 1/1000
Reactivity:	Human, Mouse
Host:	Rabbit
Isotype:	Ig
Clonality:	Polyclonal
Immunogen:	Synthetic peptide (233-262 aa) - KLH conjugated - corresponding to internal domain of human IGSF8.
Specificity:	This antibody detects IGSF8 (Center).
Formulation:	PBS with 0.09% (W/V) Sodium Azide. State: Aff - Purified State: Liquid purified Ig fraction
Concentration:	lot specific
Purification:	Purified through a protein A column; followed by peptide affinity purification.
Conjugation:	Unconjugated
Storage:	Store the antibody undiluted at 2-8°C for one month or (in aliquots) at -20°C for longer. Avoid repeated freezing and thawing.
Stability:	Shelf life: one year from despatch.
Gene Name:	immunoglobulin superfamily member 8
Database Link:	Entrez Gene 140559 Mouse Entrez Gene 93185 Human Q969P0



[View online »](#)

Background:

GSF8/PGRL/EWI-2 is a membrane protein that contains 4 Ig domains and forms highly proximal, specific and stoichiometric complexes with both CD9 and CD81 a tetraspanin. Tetraspanins and their molecular partners from primary complexes that then undergo tetraspanin-tetraspanin interactions to form a network of molecular interactions call a tetraspanin web. IGSF8 then may play a key role in diverse functions ascribed to CD81 and CD9 including oocyte fertilization or hepatitis C virus function, regulation of proliferation and differentiation of keratinocytes. It may also be a negative regulator of cell motility and suppress T-cell mobility coordinately with CD81.

Synonyms:

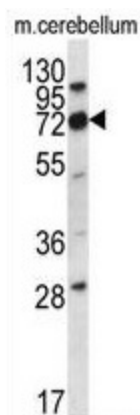
CD81 partner 3, LIR-D1, CD81P3, EW12, KCT4

Note:

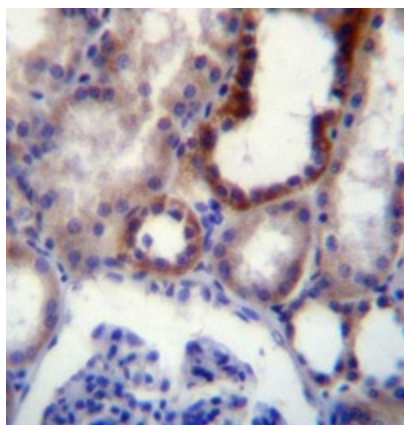
Molecular Weight: 65034 Da

Protein Families:

Transmembrane

Product images:

Western blot analysis in mouse cerebellum tissue lysates (35ug/lane) using Cd316 / IGSF8 antibody. This demonstrates the IGSF8 antibody detected the IGSF8 protein (arrow).



Immunohistochemistry analysis in formalin fixed and paraffin embedded (FFPE) human kidney tissue using Cd316 / IGSF8 antibody., followed by peroxidase conjugation of the secondary antibody and DAB staining. This data demonstrates the use of IGSF8 antibody for immunohistochemistry. Clinical relevance has not been evaluated.