

Product datasheet for **AP52176PU-N**

IGSF5 (N-term) Rabbit Polyclonal Antibody

Product data:

Product Type:	Primary Antibodies
Applications:	WB
Recommended Dilution:	ELISA: 1/1000. Western blot: 1/100 - 1/500.
Reactivity:	Human
Host:	Rabbit
Isotype:	Ig
Clonality:	Polyclonal
Immunogen:	KLH conjugated synthetic peptide between 1-30 amino acids from the N-terminal region of human IGSF5
Specificity:	This antibody reacts to IGSF5.
Formulation:	PBS State: Aff - Purified State: Liquid purified Ig fraction Preservative: 0.09% (W/V) sodium azide
Concentration:	lot specific
Purification:	Affinity chromatography on Protein A
Conjugation:	Unconjugated
Storage:	Store the antibody undiluted at 2-8°C for one month or (in aliquots) at -20°C for longer. Avoid repeated freezing and thawing.
Stability:	Shelf life: one year from despatch.
Predicted Protein Size:	44593 Da
Gene Name:	immunoglobulin superfamily member 5
Database Link:	Entrez Gene 150084 Human Q9NSI5



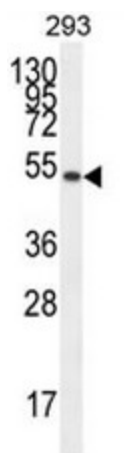
[View online »](#)

Background: Provides, together with MAG11, an adhesion machinery at tight junctions, which may regulate the permeability of kidney glomerulus and small intestinal epithelial cells. Mediates calcium-independent homophilic cell adhesion. In testis, it may function as a cell adhesion molecule rather than a tight-junction protein. It may participate in the adhesion between spermatogonia-spermatogonia, spermatogonia-Sertoli cells, and Sertoli cells-Sertoli cells (By similarity).

Synonyms: Immunoglobulin superfamily member 5,JAM4

Protein Pathways: Epithelial cell signaling in Helicobacter pylori infection, Tight junction

Product images:



IGSF5 Antibody (N-term) western blot analysis in 293 cell line lysates (35ug/lane). This demonstrates the IGSF5 antibody detected the IGSF5 protein (arrow).